

NORTH POINT™

1.28 GPF (4.8 LPF) Elongated Wall-Hung Back-outlet Spud Bowl

5 1/4" or 7 1/4"
Vertical Rough-in

Features:

□ 25-038

- Vitreous china
- 12.8gpf/4.8Lpf High Efficiency
- Elongated Back Outlet Bowl
- Top Spud
- Siphon Jet
- 1 1/2" Spud for Flushometer Valve
- Flushometer Valve not Included
- Bolts and Caps not Included
- Toilet Seat not Included



Technical Information:

Included Components:

- Bowl 25-038

Fixtures:

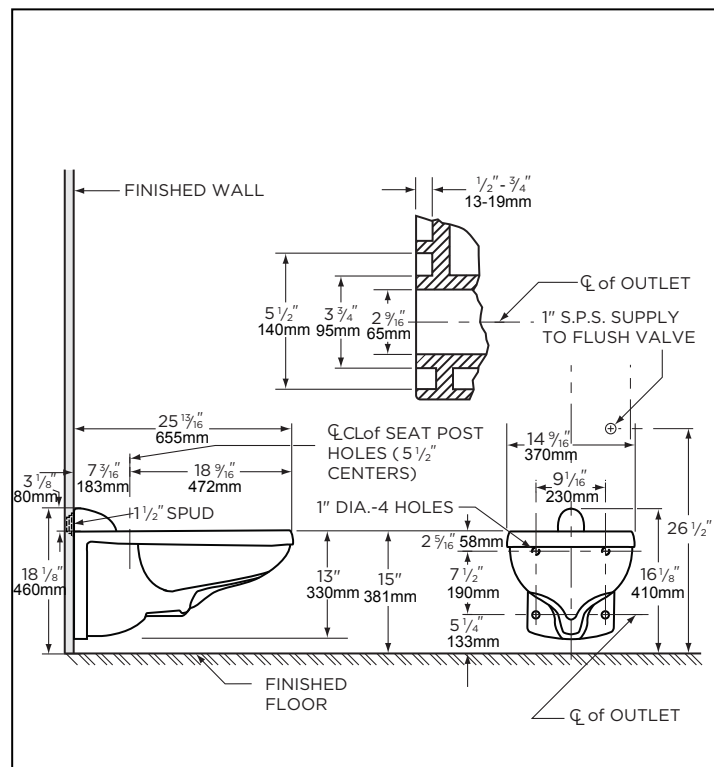
Configuration	Top Spud, Wall-Hung Back-outlet Elongated Spud Bowl
Water per Flush	1.28 gpf (4.8 Lpf)
Rough-In	5 1/4" or 7 1/4" For Handicapped & Elderly Installation Rough-in
Height	16 1/8"
Width	14 9/16"
Depth	25 13/16"
Trapway	2"
Large Water Surface	8 11/16" x 6 5/16"
Product Weight	37 lbs

Available Colors:

- White
- Other: Refer to Price Book for additional colors

Warranty:

- Limited Lifetime Warranty



NOTES: All dimensions are in inches and millimeter. *These measurements may vary. Use flush valve manufacturer's recommended rough-in and consult local code requirements. Suggest 1/16" clearance between face of wall and back of bowl.

Carrier fitting as required to be furnished by others. Flush valve not included and must be ordered separately.

Illustrations may not be drawn to scale.

PLUMBERS NOTE: Provide suitable reinforcement for all wall supports. Rough height 15" may vary with architects requirements. For Handicapped and Elderly installation rough height will be 17".

IMPORTANT: Dimensions of fixtures are nominal and may vary within the range of tolerances established by ASME Standard A 112.19.2.

THIS FIXTURE QUALIFIES ACCORDING TO ASME TEST PROCEDURES AS A HIGH-EFFICIENCY WATER CLOSET WITH AN AVERAGE CONSUMPTION OF 1.28 gpf (4.8 Lpf) OR LESS.