

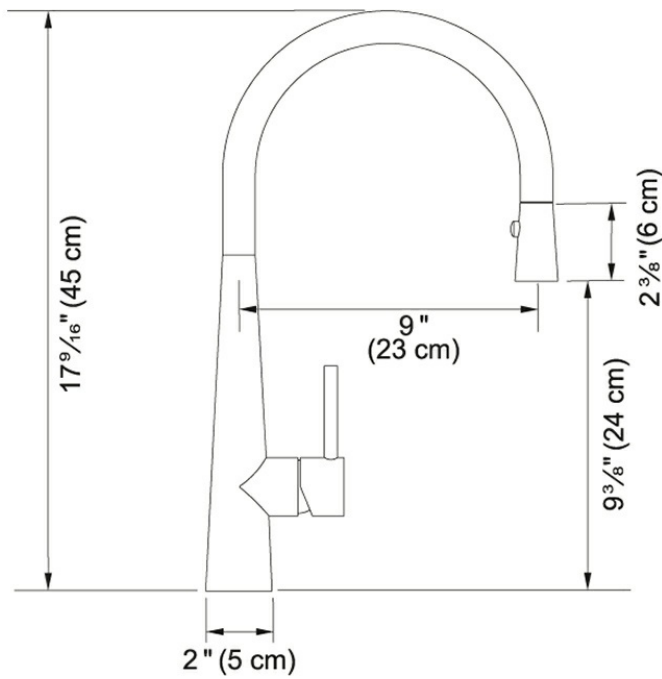
Steel FF3450 Stainless Steel

The effortless modern design of Franke’s Steel faucets are constructed of solid stainless steel for superior corrosion resistance, inside and out, making these faucets a culinary necessity.

Product Picture



Technical Drawing



Product Information

| | |
|--------------------------|-----------------------|
| Version | Arc Spout |
| Spray Type | Full and Needle Spray |
| Faucet Operation | Side Lever |
| Flow Rate | 1.75 gpm |
| Cartridge | Ceramic Cartridge |
| Where to buy | Showroom |
| Countertop hole diameter | 1 3/8" |

Article Numbers

| | |
|----------------|--------------|
| FUN# | 115.0355.504 |
| US Part Number | FF3450 |

