

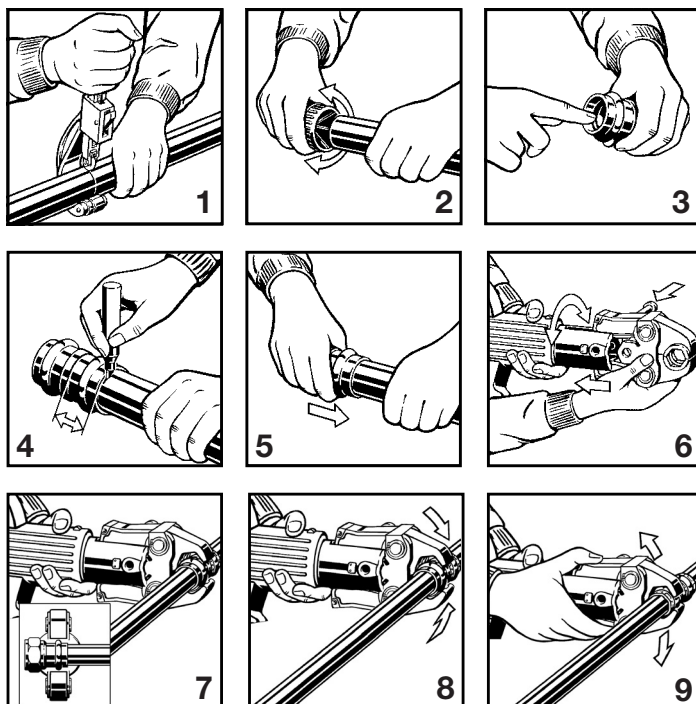
# Product Instructions

**viega**

## Viega ProPress®

For Types K, L and M Hard Copper Tubing in ½" to 2" and Soft Copper Tubing in ½" to 1¼".

This Product Contains Zero Lead



**⚠ WARNING** Read and understand all instructions for installing Viega ProPress fittings. Failure to follow all instructions may result in extensive property damage, serious injury or death.

1. Cut copper tubing at right angles using displacement type cutter or fine-toothed steel saw.
2. Remove burr from inside and outside of tubing to prevent cutting sealing element.
3. Check seal for correct fit. Do not use oils or lubricants. Use only Viega ProPress Shiny Black EPDM or Dull Black FKM Sealing Elements.
4. Mark proper insertion depth as indicated by the Viega ProPress Insertion Depth Chart. Improper insertion depth may result in improper seal.
5. While turning slightly, slide press fitting onto tubing to the marked depth. **Note: End of tubing must contact stop.**
6. Insert appropriate Viega jaw into the pressing tool and push in holding pin until it locks in place.
7. Open the jaw and place at right angles on the fitting. Visually check insertion depth using mark on tubing.
8. Start pressing process and hold the trigger until the jaw has engaged the fitting.
9. After pressing, the jaw can be opened again.
10. For applications requiring Viega ProPress with FKM sealing elements, remove the factory installed EPDM sealing element and replace with FKM sealing element.

Viega ProPress Insertion Depth Chart

| Tube Size       | ½" | ¾"   | 1"   | 1¼" | 1½"     | 2"      |
|-----------------|----|------|------|-----|---------|---------|
| Insertion Depth | ¾" | 7⁄8" | 7⁄8" | 1"  | 1 7⁄16" | 1 9⁄16" |



**Leak Testing with Smart Connect®:** Unpressed connections are located by pressurizing the system with air or water. When testing with water the proper pressure range is 15 psi to 85 psi maximum. Leak testing with air can be dangerous at high pressures. When testing with compressed air

the proper pressure range is ½ psi to 45 psi maximum. Following a successful leak test, the system may be pressure tested up to 200psi if required by local code requirements or project specifications.

This document subject to updates. For the most current Viega technical literature please visit [www.viega.net](http://www.viega.net).  
Click Services -> Click Electronic Literature Downloads -> Select Product Line -> Select Desired Document

Viega LLC, 301 N. Main, 9th Floor • Wichita, KS 67202 • Ph: 800-976-9819 • Fax: 316-425-7618