

## ProPEX® Brass Reducing Tee

Submittal Information

Revision B: March 17, 2009

### Project Information

Job Name:

Location:

Part No. Ordered:

Engineer:

Date Submitted:

Contractor:

Submitted By:

Manufacturer's Representative:

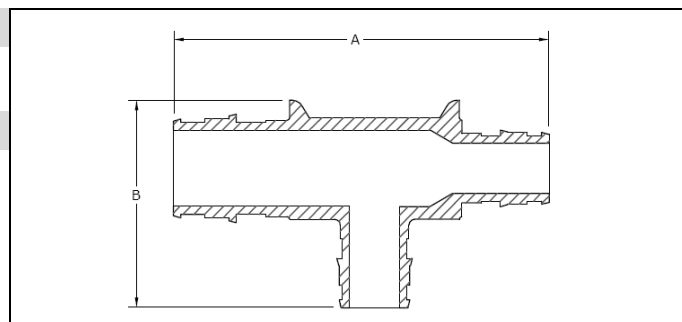
Approved By:

### Technical Data

Material: CA 360 Brass/EN 12165 Brass

### Product Information and Application Use

ProPEX® Brass Reducing Tee makes diverting connections for Uponor PEX tubing in supply and return mains.<sup>1</sup> Available for use in hot and cold domestic potable water systems, AQUASAFE® Residential Fire Safety Systems and in any hydronic heating system. Each end of the fitting is manufactured with the ProPEX fitting for connections to hePEX™ or any AquaPEX® tubing. Branch size is listed last in the part description.



✓ Description	Part Number	A	B	Weight
ProPEX Brass Reducing Tee, ½" PEX x ½" PEX x ¾" PEX	Q4705575	2.80"	1.93"	0.40 lbs.
ProPEX Brass Reducing Tee, ¾" PEX x ½" PEX x ½" PEX	Q4707555	3.03"	1.69"	0.40 lbs.
ProPEX Brass Reducing Tee, ¾" PEX x ½" PEX x ¾" PEX	Q4707557	3.03"	1.93"	0.40 lbs.
ProPEX Brass Reducing Tee, ¾" PEX x ¾" PEX x ½" PEX	Q4707550	3.27"	1.69"	0.40 lbs.
ProPEX Brass Reducing Tee, ¾" PEX x ¾" PEX x 1" PEX*	Q4707710	3.62"	2.42"	0.50 lbs.
ProPEX Brass Reducing Tee, 1" PEX x ¾" PEX x ¾" PEX*	Q4701775	3.86"	2.18"	0.30 lbs.
ProPEX Brass Reducing Tee, 1" PEX x ¾" PEX x 1" PEX*	Q4701751	3.86"	2.42"	0.40 lbs.
ProPEX Brass Reducing Tee, 1" PEX x 1" PEX x ½" PEX*	Q4701150	4.09"	1.95"	0.40 lbs.
ProPEX Brass Reducing Tee, 1" PEX x 1" PEX x ¾" PEX*	Q4701175	4.09"	2.18"	0.40 lbs.
ProPEX Brass Reducing Tee, 2" PEX x 2" PEX x 1½" PEX	Q4702215	7.43"	3.99"	2.40 lbs.
ProPEX Brass Reducing Tee, 2" PEX x 2" PEX x 1¼" PEX	Q4702213	7.43"	3.73"	2.40 lbs.
ProPEX Brass Reducing Tee, 2" PEX x 2" PEX x 1" PEX	Q4702210	7.43"	3.47"	2.40 lbs.
ProPEX Brass Reducing Tee, 2" PEX x 2" PEX x ¾" PEX	Q4702275	7.43"	3.23"	2.40 lbs.
ProPEX Brass Reducing Tee, 2" PEX x 1½" PEX x 1½" PEX	Q4702055	6.99"	3.99"	2.40 lbs.
ProPEX Brass Reducing Tee, 2" PEX x 1½" PEX x 1¼" PEX	Q4702053	6.99"	3.73"	2.40 lbs.
ProPEX Brass Reducing Tee, 2" PEX x 1½" PEX x 1" PEX	Q4702051	6.99"	3.47"	2.40 lbs.
ProPEX Brass Reducing Tee, 2" PEX x 1½" PEX x ¾" PEX	Q4702575	6.99"	3.23"	2.40 lbs.

### Installation

Use appropriate PEX Ring for connecting the tubing. Refer to the AquaPEX Installation Handbook, the AQUASAFE Installation Guide or the Radiant Floor Installation Handbook for additional information.

### Standards

CAN/CSA B137.5; ASTM F877; ASTM F1960

### Codes

IPC; UPC; NSPC; NPC of Canada

### Listings

IAPMO 3558; ANSI/NSF 14- and 61-certified; HUD MR 1269; ICC ESR 1099; \*UL 1821; \*ULC/ORD C 199P

### Related Applications

PEX-a Plumbing Systems  
Radiant Heating and Cooling Systems  
AQUASAFE Fire Safety Systems

### Contact Information

Uponor, Inc.  
5925 148<sup>th</sup> Street West  
Apple Valley, MN 55124 USA  
Phone: (800) 321-4739  
Fax: (952) 891-2008  
www.uponor-usa.com

Uponor Ltd.  
2000 Argentia Rd., Plaza 1, Ste. 200  
Mississauga, ON L5N 1W1 CANADA  
Phone: (888) 994-7726  
Fax: (800) 638-9517  
www.uponor.ca

<sup>1</sup>ProPEX® is a registered trademark of Uponor, Inc. ProPEX™ is a trademark of Uponor Ltd.