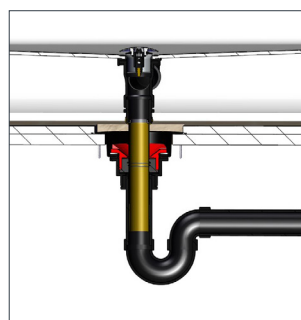
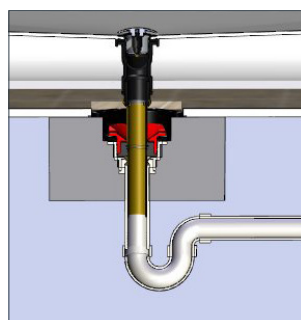


Underneath view of Tub



Wood sub floor installation*

1. Affix Island Tub Drain® to Sub Floor and connect to P-Trap
2. Test Cap is integral to product. Remove Cap upon completion of DWV system test (if applicable)
3. Attach Tailpiece (Supplied) to Bath Waste
4. Carefully lower Tub into Island Tub Drain®



Slab on grade installation*

1. Connect Island Tub Drain® to P-Trap
2. Test Cap is integral to product. Remove Cap upon completion of DWV system test (if applicable)
3. Pour Concrete around Island Tub Drain® and allow to dry
4. Attach Tailpiece (Supplied) to Bath Waste
5. Carefully lower Tub into Island Tub Drain®

*For complete Installation Instructions please refer to the Instruction Sheet supplied with Island Tub Drain®



See the installation videos at
www.youtube.com/c/osbplumbing

Or scan
the QR
Code



Island Tub Drain® is Patented in Canada (Patent # 2,813,010) and the United States of America (Patent # 9,551,138).
Island Tub Drain® is a Registered Trademark of Oakville Stamping and Bending Limited.
The Red Drain® is a Registered Trademark of Oakville Stamping and Bending Limited.

OS&B is a Registered Trademark of Oakville Stamping and Bending Limited (OS&B®).

OSBITD-0622

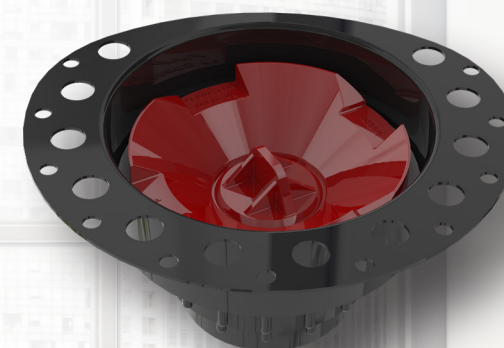
Island Tub Drain®

Testable Drain Rough-in featuring a snap off Test Cap and an asymmetrical Deck Plate designed not to interfere with a freestanding faucet rough-in.

Rough in a Freestanding Tub in advance....
Install a Freestanding Bath Tub in minutes.

No muss. No fuss. No kidding.

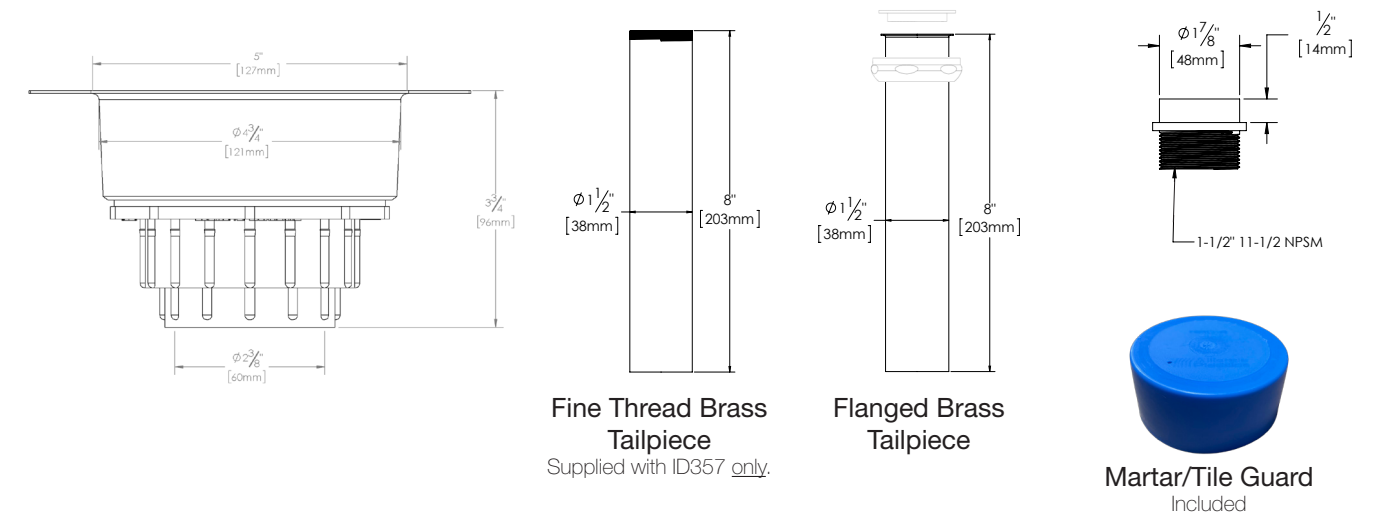
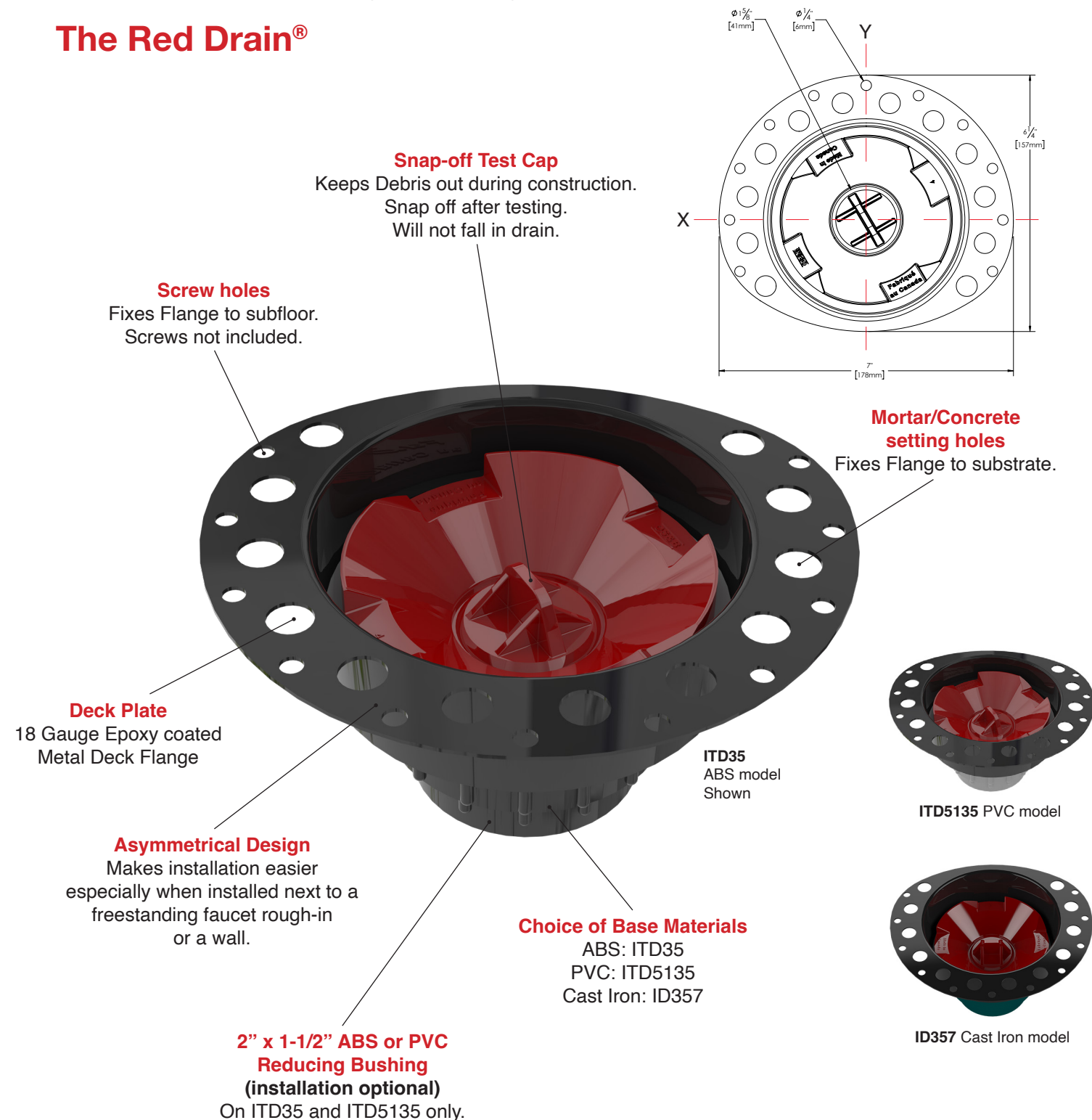
The Red Drain®



Asymmetrical design makes Installation of a freestanding bath tub even easier...

Featuring a snap-off Test Cap and an Asymmetrical Deck Plate designed not to interfere with a freestanding faucet rough-in!

The Red Drain®



Features/Benefits

- Asymmetrical 18 Gauge Epoxy coated Metal Deck Flange - makes installation in tight spaces easier
- Built-in Snap-off Test Cap - allows for water/air/smoke testing (Rated to 30psi)
- Island Tub Drain® is a Freestanding Tub rough-in (install before tile installation) - access below fixture not required
- Low profile design - allows for installation in 8" joist space or greater

Includes

- Fine Thread Brass Tailpiece (supplied with ID357 only)
- Flanged Brass Tailpiece
- ABS or PVC Adapter Kit (ITD35/ITD5135 only). Attaches to ABS or PVC Bath Wastes
- Island Drain assembly
- 2" x 1-1/2" ABS or PVC Reducing Bushing (ITD35/ITD5135 only)
- Cutting template
- Mortar/Tile Guard

Installation Tips

- **NOTE:** Island Tub Drain® IS NOT FOR USE with liquid applied or sheet membranes
- **NOTE:** Island Tub Drain® MUST BE INSTALLED in a dry area with no potential of water contact
- Use 5" hole saw to cut sub floor (not included). Cutting template included
- Secure Deck Flange with 6 screws (not included)

OS&B ITEM	DESCRIPTION	BARCODE 7 75439	CTN QTY
ITD35	ABS ISLAND TUB DRAIN®	06452 6	1
ITD5135	PVC ISLAND TUB DRAIN®	06455 7	1
ID357	CAST IRON ISLAND TUB DRAIN®	06462 5	1

Certification*



*The “cSAus Meets UPC” mark means the product conforms to the requirements of the NPC, UPC, IPC and IRC.