



Camber®
Countertop Bathroom Sink
K-2282-10

Features

- 21" (533 mm) x 20-7/8".
- 10" (254 mm) widespread faucet holes.

Material

- Vitreous china.

Installation

- Drop-in

Recommended Accessories

K-8998 P-Trap

Components

Additional included component/s: Adjustable linkage, and Cut-out template.



ADA

CSA B651

Codes/Standards

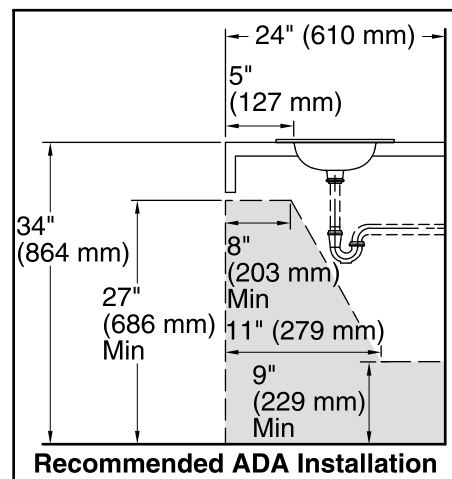
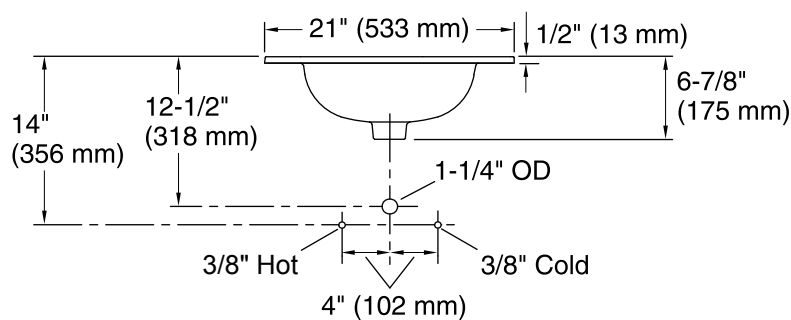
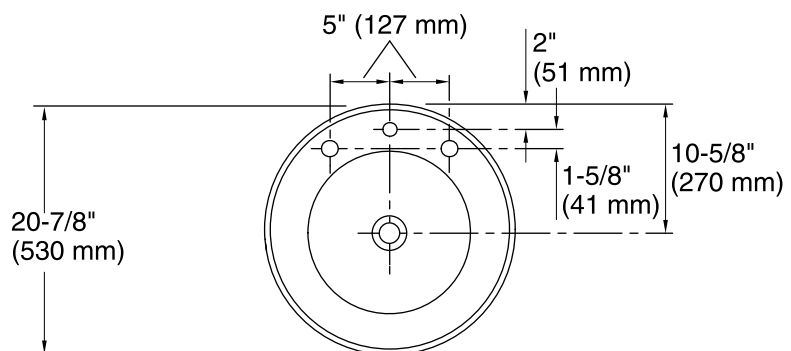
ASME A112.19.2/CSA B45.1

ADA

ICC/ANSI A117.1

CSA B651

See website for detailed warranty information.



Technical Information

All product dimensions are nominal.

Installation:	Under-mount, Drop-in
Bowl area:	Length: 21" (533 mm)
	Width: 20-7/8" (530 mm)
	Water depth: 5" (127 mm)
Number of deck holes:	3
Faucet hole(s):	1-3/8" (35 mm)
Drain hole:	1-3/4" (44 mm)

Notes

Install this product according to the installation instructions.

IMPORTANT! Due to the large size of the bathroom sink, a 21-1/8" (537 mm) wide flat surface is required for installation on a vanity top. Bathroom sinks without faucet holes require wall-mount faucets with 7" (178 mm) minimum spout length.

Supply dimensions are based on a 12" (305 mm) riser which may require cutting.

NOTICE: Countertop manufacturer or cutter must use the cut-out template provided with the product, or a current one provided by Kohler Co. (call 1-800-4KOHLER). Kohler Co. is not responsible for cut-out errors when the incorrect cut-out template is used

ADA, CSA B651 compliant when installed to the specific requirements of these regulations.