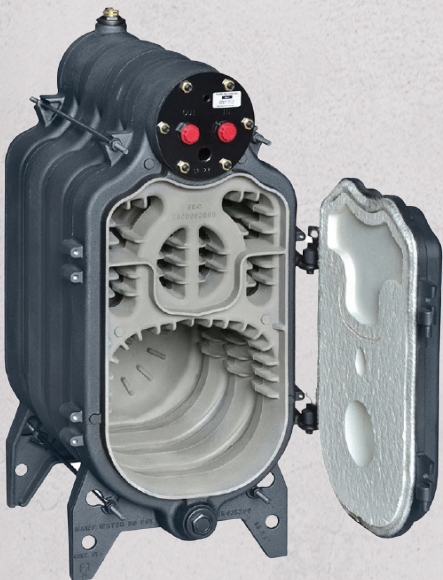


Saint Roch

Cast Iron Boilers

UNIVERSAL

The Universal is a light residential 3-pass design boiler which can be fired with B20/oil or gas(LP/Nat), making it a versatile choice for many applications.



**FINALLY A CAST IRON 3-PASS
TANKLESS BOILER!!!**

Use with or without a domestic coil... making this boiler truly UNIVERSAL.



**Input rates
from 140,000 to 245,000 MBH**

THE SAINT ROCH SRU "UNIVERSAL" SERIES

The NEW SAINT ROCH SRU SERIES cast iron boiler with triple pass design and low water content is equipped with a cylindrical coil chamber to house a coil to produce DHW, making it truly UNIVERSAL. SRU boiler block will provide efficiencies exceeding 87%.

- The SRU's electronic 3250TC "Fuel Smart" controller manages the burner and circulator operation to minimize fuel consumption during periods of inactivity and provides outdoor reset or cold start for space heating and is equipped with low water control.
- St. Roch Cast Iron boilers are among the world's most durable boilers exceeding ASME, Class 30 requirements. Boiler sections are connected with steel push nipples. A hinged swing door is provided for full access to combustion chamber and heat exchanger.
- SRU Universal boilers are shipped as assembled boiler blocks with a separately boxed casing, pre-set gun burner (#2 Oil, B20, NG or Propane), DHW coil and trim kit.

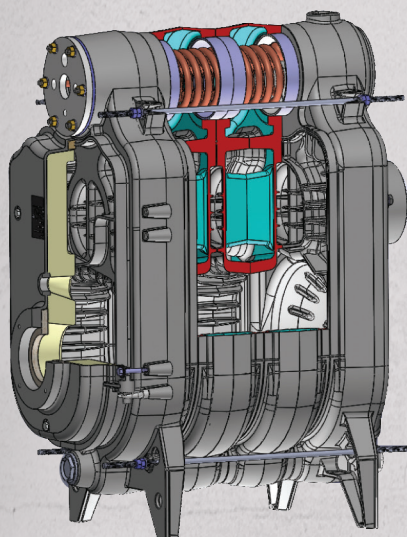
You will enjoy confidence with the SRU series with its limited lifetime warranty and its capability to be converted from B20 Fuel Oil to Gas or vice versa by simply changing the burner.



Product Code	Number of Sections	Heating Capacity (MBH) DUAL RATES (E/H)*	INPUT (MBH) DUAL RATES (E/H)*	Length (Inch)	Coil Size (GPM)	Water Content (gal)	Weight (Lbs) Boiler Block	Efficiency (%) DUAL RATES (E/H)*
SRU30/	3	123/140	140/161	23.2"	3.5	10.6	337	87.1/86.3
SRU40/	4	154/171	175/196	28.3"	4.5	13.8	425	87.1/86.5
SRU50/	5	185/208	210/238	33.5"	5	16.7	509	87.2/86.5
SRU60/	6	216	245	38.6"	5	19.6	599	87.3

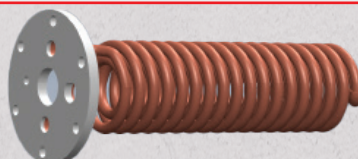


E designates ENERGY STAR compliant ratings @ 87%+ AFUE- All SRU boilers are shipped standard as Energy star compliant
H designates High output ratings @ 86%+ AFUE- To achieve high output ratings, a burner nozzle or setup change is required.



STANDARD FEATURES

- Modified Hydrostat 3250TC allows a controlled low-limit disable
- 1 1/4" NPT supply & return tapings
- 3/4" DHW NPT Tappings
- Full swing front door- for easy cleaning
- 6" Rear Flue
- 3&4 Section boiler can be direct vented



The coil is located above the heat exchanger which allows full flow across the coil, maximizing DHW production.

