

Saint Roch

Cast Iron Boilers

OPTIMAJOR

Cast-Iron Boiler System

LIGHT COMMERCIAL CAST IRON 3-PASS BOILER

STANDARD FEATURES

- FULL swing door
- 3-Pass cast iron boiler
- Mid mass boiler
- Oil, Bio and gas compatible
- Shipped knocked down
- Hydrostat 3250Plus control
- Safgard 550 LWC Included
- Manual Reset High Limit Included
- Commercial 20 Year warranty
- 2" NPT Supply manifold
- 2" NPT Return tapping

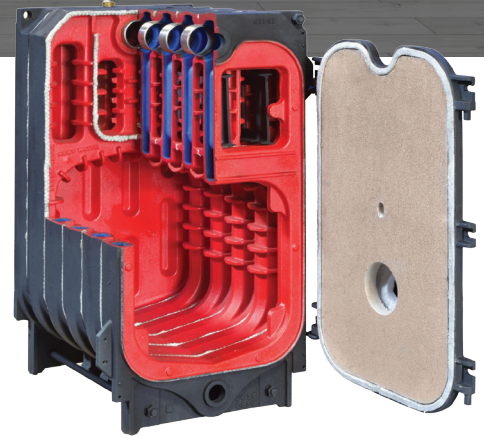


INPUT RATES
From 312,000 to 776,000MBH

QHT
INCORPORATED
The New Style of Warmth
www.qhtinc.com

THE SAINT ROCH OPTIMAJOR SERIES

The OPTIMAJOR cast iron sectional boiler is engineered to ensure high efficiency and boiler safety. The combustion chamber is equipped with fins ensuring exposure to burner heat, preventing the formation of dangerous inner stresses and reducing noise levels. The sections are connected with steel push nipples and are designed with grooves on both sides, where a refractory cord is fitted. The refractory cord adapts to the expansion and shrinking of the heating elements. The OPTIMAJOR boilers use a standard Hydrolevel 3250Plus control that is remote mounted.



The OPTIMAJOR has a full hinged cast iron door that pivots either left or right allowing complete access to the entire boiler heat exchanger and combustion chamber which makes cleaning the boiler an easy task.

Technical Information

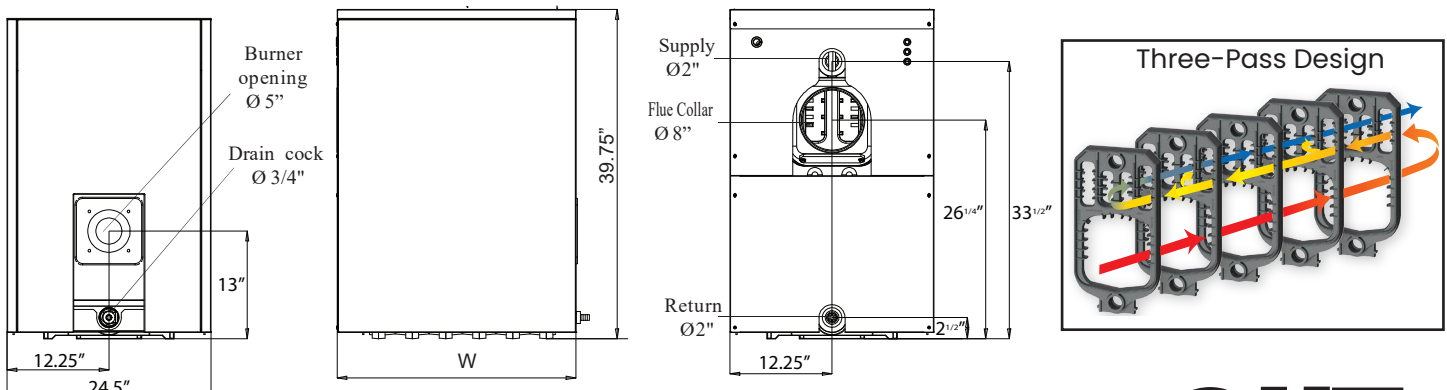
Product Code	# of Sections	Length (Inch)	Water Content (gal)	Weight (Lbs)	Heating Capacity (BTU/HR)	Net Input (BTU/HR)	Output (BTU/HR)	Efficiency Gas(%)	Efficiency Oil(%)
OPTI 6	6	29	13	871	267	312	227	85	87
OPTI 8	8	37	17	1091	377	438	320	85	87
OPTI 10	10	45	20	1312	479	560	407	85	87
OPTI 12	12	53	25	1532	588	686	500	85	87
OPTI 14	14	61	29	1752	667	776	567	85	87

Available Burners

Beckett

RIELLO
Energy For Life

Dimensions



QHT
INCORPORATED
The New Style of Warmth