

# EAST LINEAR

## Features

- Solid brass construction
- Single-post, open roller design
- Complements East Linear product series

## Toilet Tissue Holder 990-1570

## Codes / Standards Compliance

Meets or exceeds the following at date of manufacture:

- All applicable US Federal and State material regulations



## Colors / Finishes

- 10B: Oil Rubbed Bronze
- 15: Polished Nickel
- 15S: Satin Nickel - PVD
- 26: Polished Chrome
- Other: Refer to the Newport Brass catalog for additional color/finish options.

## Specified Model

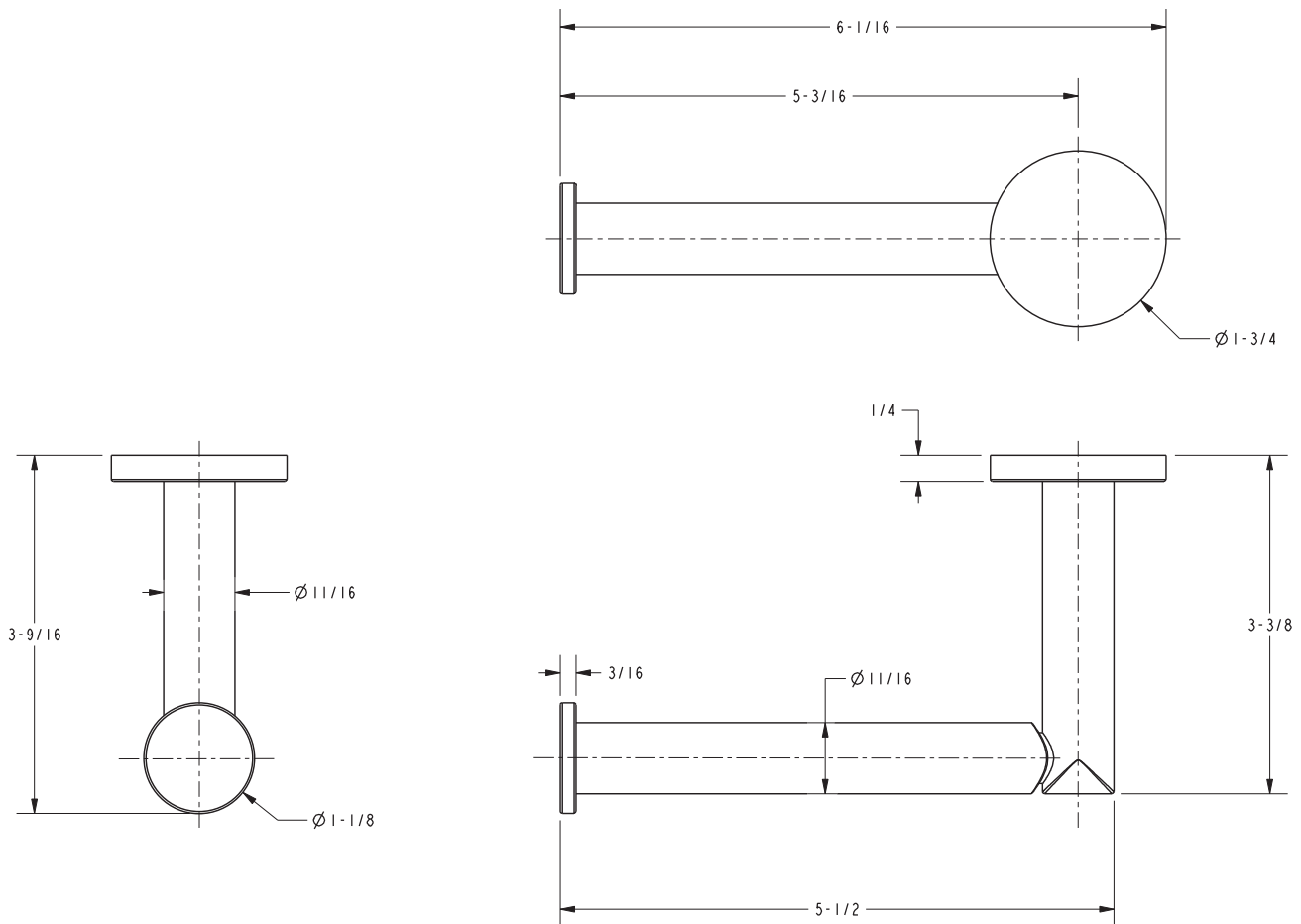
Model	Description	Colors   Finishes				
990-1570	Open Toilet Tissue Holder	<input type="checkbox"/> 10B	<input type="checkbox"/> 15	<input type="checkbox"/> 15S	<input type="checkbox"/> 26	<input type="checkbox"/> Other

## Product Specification Add "Color / Finish" suffix to Model number, below.

The Toilet Tissue Holder shall be made of solid brass construction and incorporate a single-post, open roller design. Toilet Tissue Holder shall complement Newport Brass East Linear product series. Toilet Tissue Holder shall be Newport Brass Model 990-1570/\_\_\_\_\_.

# 990-1570

## PRODUCT DIMENSIONS *(Units are in inches)*



### East Linear Toilet Tissue Holder 990-1570