

DESCRIPTION

- Chrome plated single function handheld shower with non-positive shut off
- Contains: hand-held shower, 30" slide bar, drop ell, vacuum breaker, 69" metal hose and mounting hardware
- **SLIDE BAR IS NOT TO BE USED AS A GRAB BAR**
- Supplied with vandal resistant screws
- Quick cleaning rubber nozzles

FLOW

- 1.1 gpm (4.2 L/min) minimum at 45psi
- 1.5 gpm (5.7 L/min) maximum at 80 psi

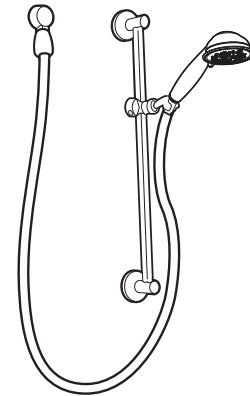
STANDARDS

- Third party certified to WaterSense®, ASME A112.18.1/CSA B125.1, ASSE 1014 and all applicable requirements referenced therein



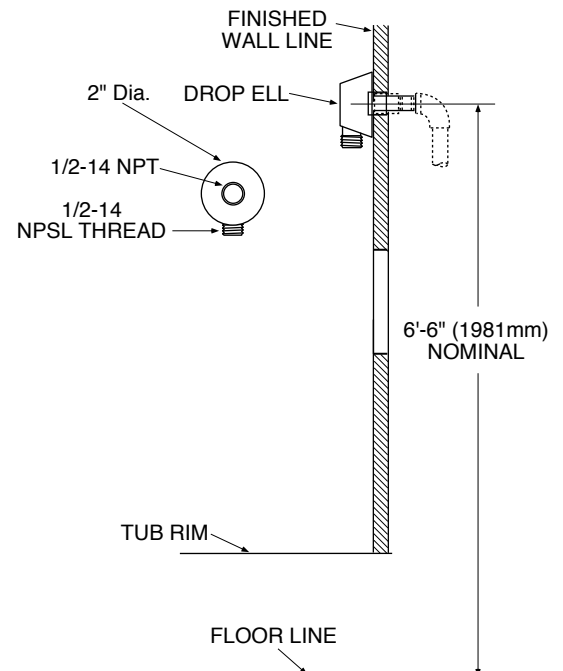
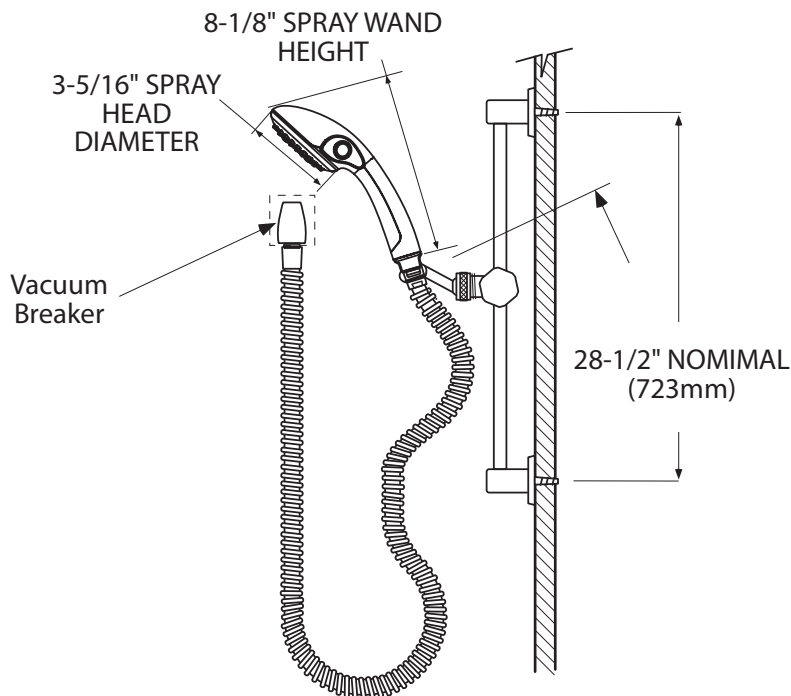
WARRANTY

- Warranted for 5 years against material or manufacturing defects



Hand-Held Shower System

Model: 52710EP15



CRITICAL DIMENSIONS

(DO NOT SCALE)