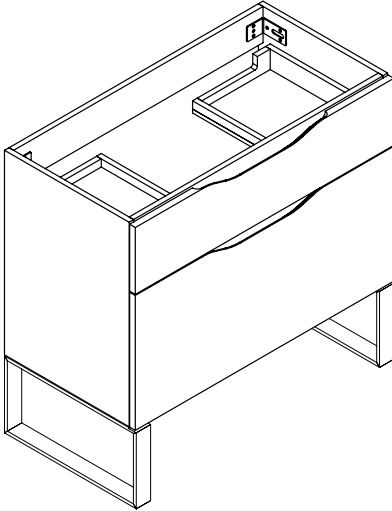


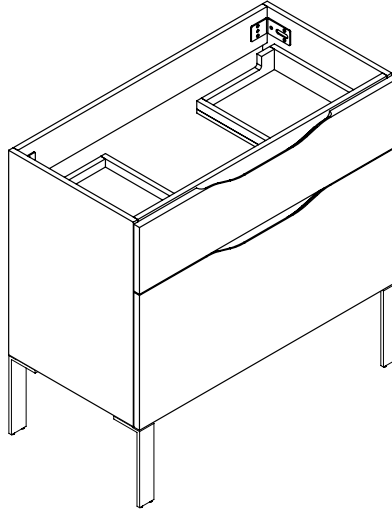
## Milano - FREE STANDING VANITY

## Feet/Base Installation

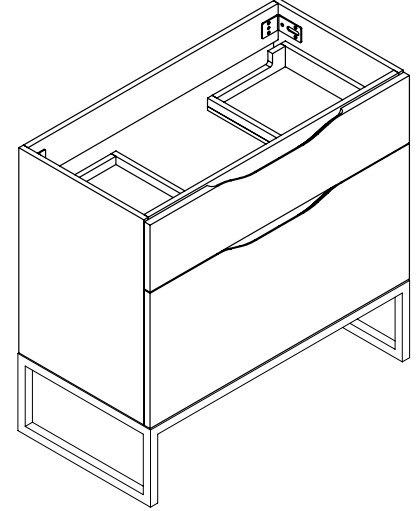
S-FEET



L-FEET



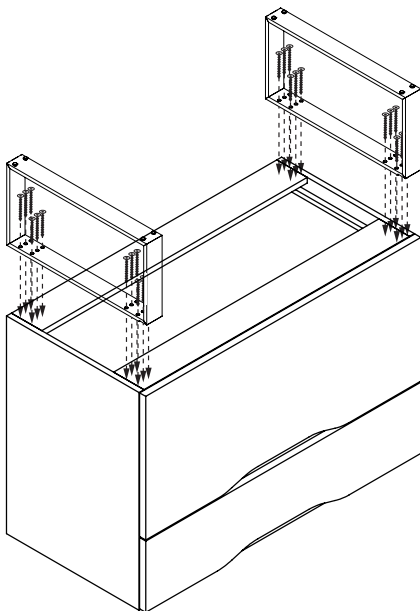
C-BASE



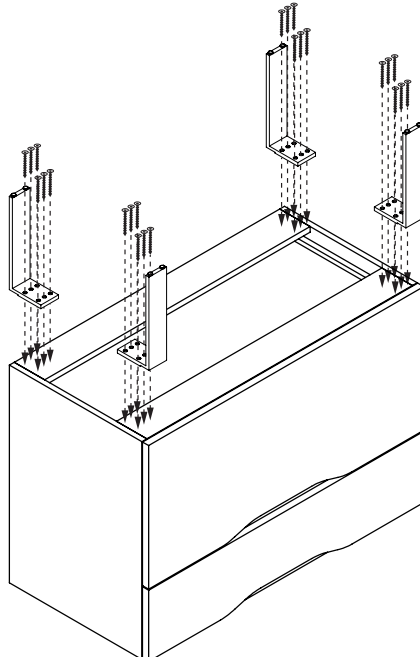
### FEET/BASE INSTALLATION

1. Flip cabinet in the upside down position.
  2. Mark screw locations using legs/base as template.
  3. Pre-drill holes with 5/64", 3/32" or 7/64" drill bit about 1/2" deep.
  4. Using provided screws, fix legs/base to cabinet as shown below.
- If using a regular battery drill, set clutch to minimum and increase setting as needed.  
**DO NOT OVER TIGHTEN THE SCREWS. DOING SO WILL SPLIT THE WOOD SIDE PANEL.**

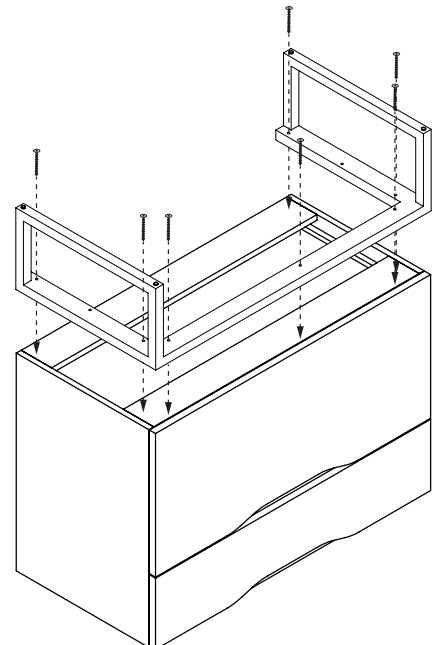
S-FEET INSTALLATION



L-FEET INSTALLATION



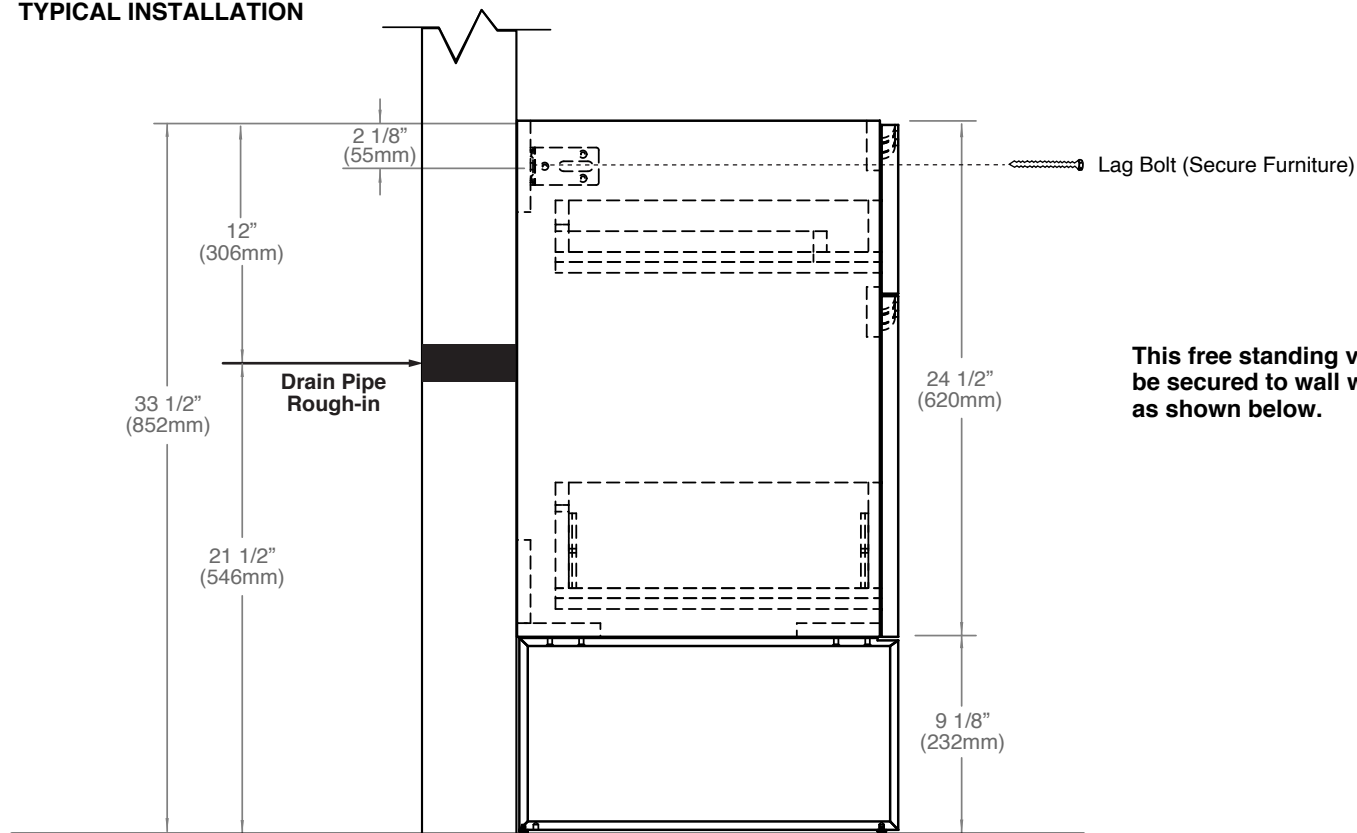
C-BASE INSTALLATION



## Milano - FREE STANDING VANITY

## Installation Guide

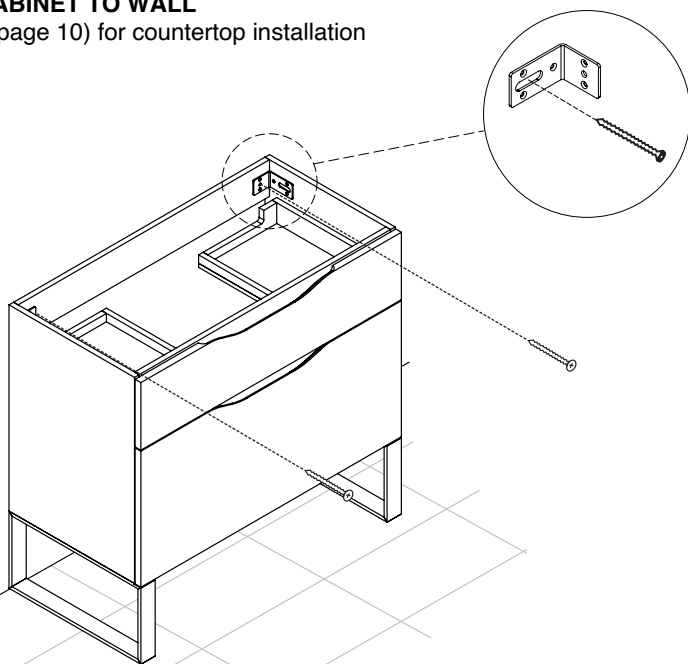
### TYPICAL INSTALLATION



**This free standing vanity must be secured to wall with screws as shown below.**

### SECURE CABINET TO WALL

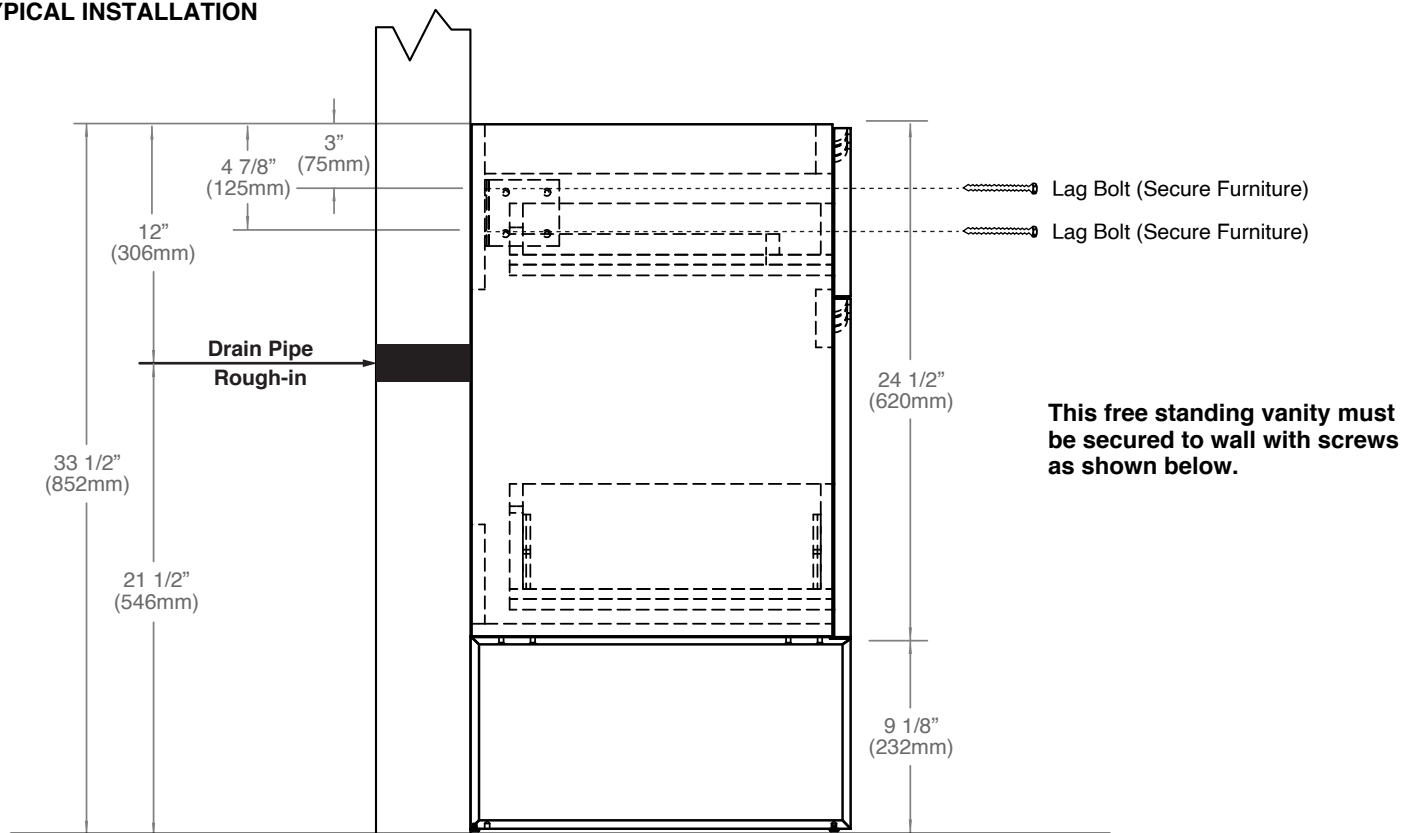
See step 4 (page 10) for countertop installation



## Milano - FREE STANDING VANITY

## Installation Guide

### TYPICAL INSTALLATION



### SECURE CABINET TO WALL

See step 4 (page 10) for countertop installation

