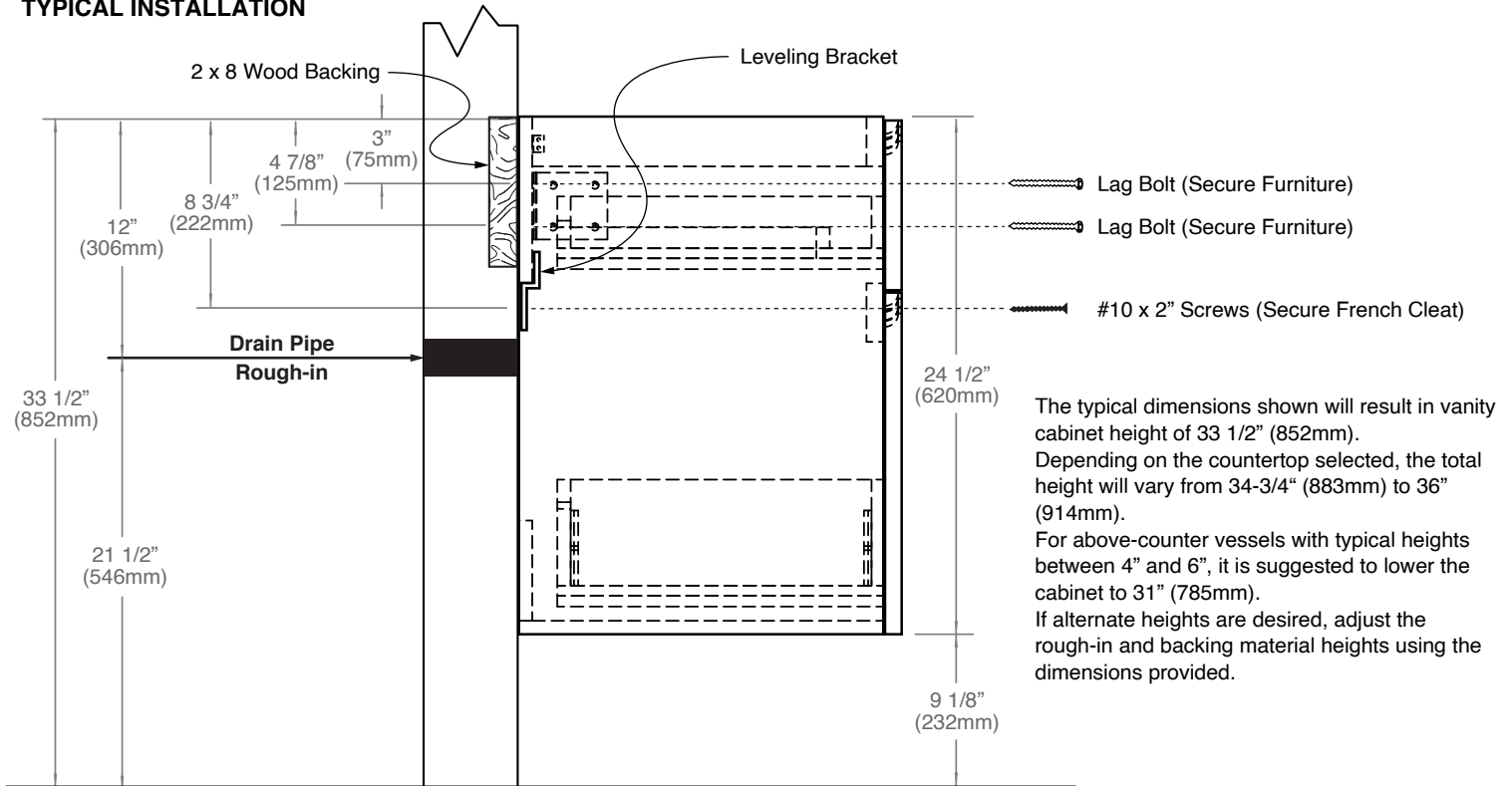


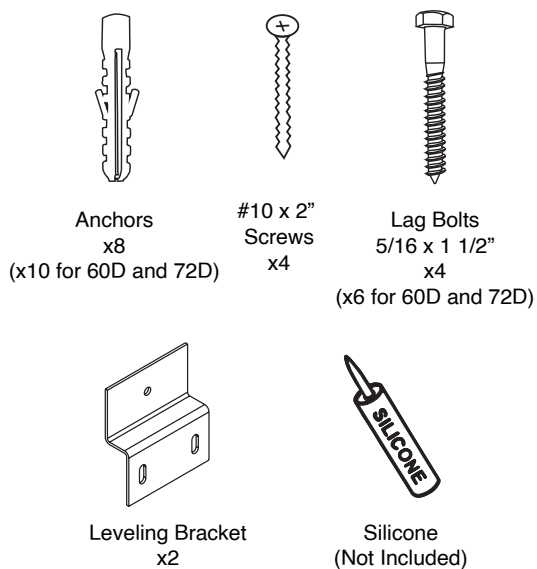
Bolano - WALL HUNG VANITY

Installation Guide

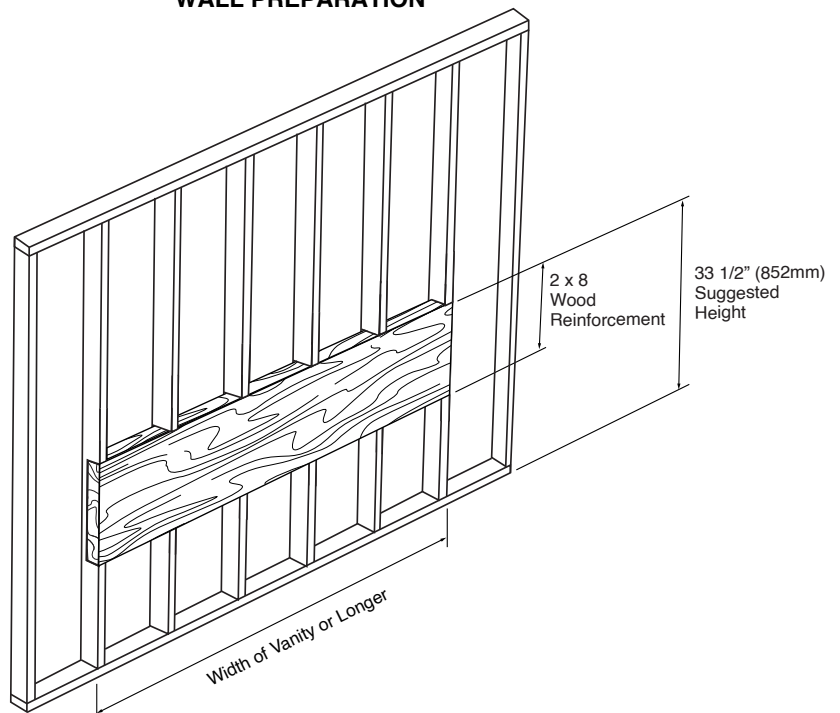
TYPICAL INSTALLATION



ACCESSORIES FOR INSTALLATION



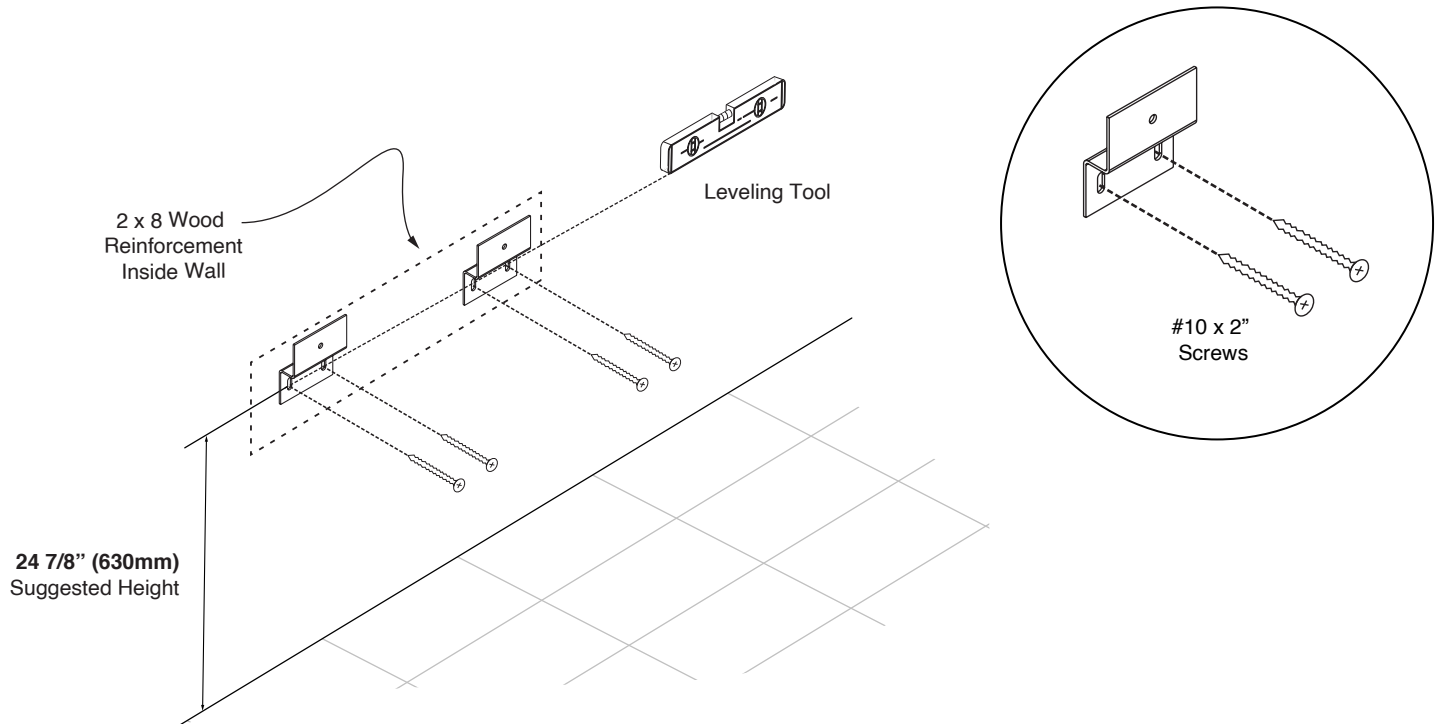
WALL PREPARATION



Bolano - WALL HUNG VANITY

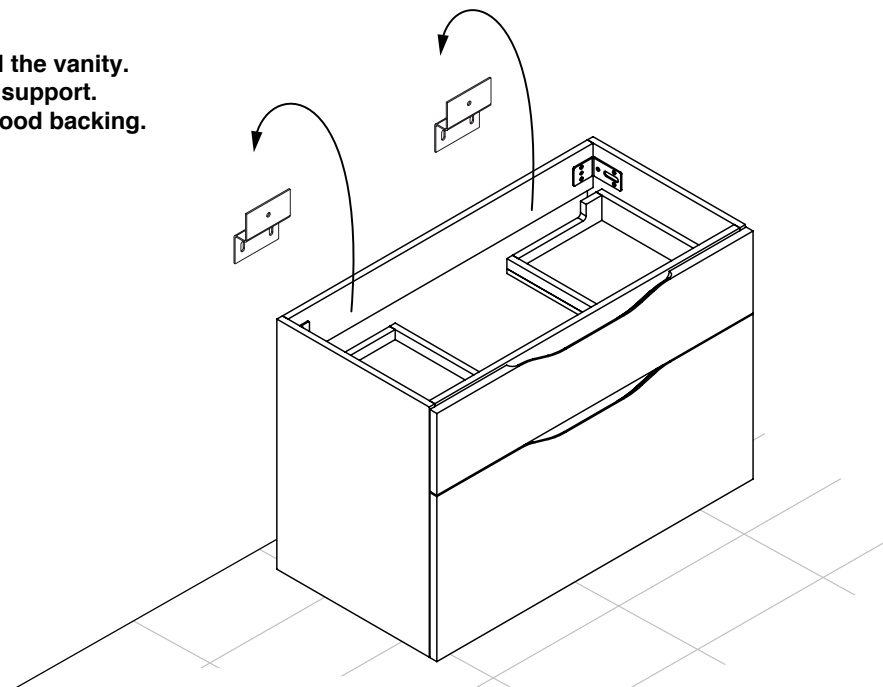
Installation Guide

STEP 1: Install leveling brackets



STEP 2: Place vanity on leveling bracket.

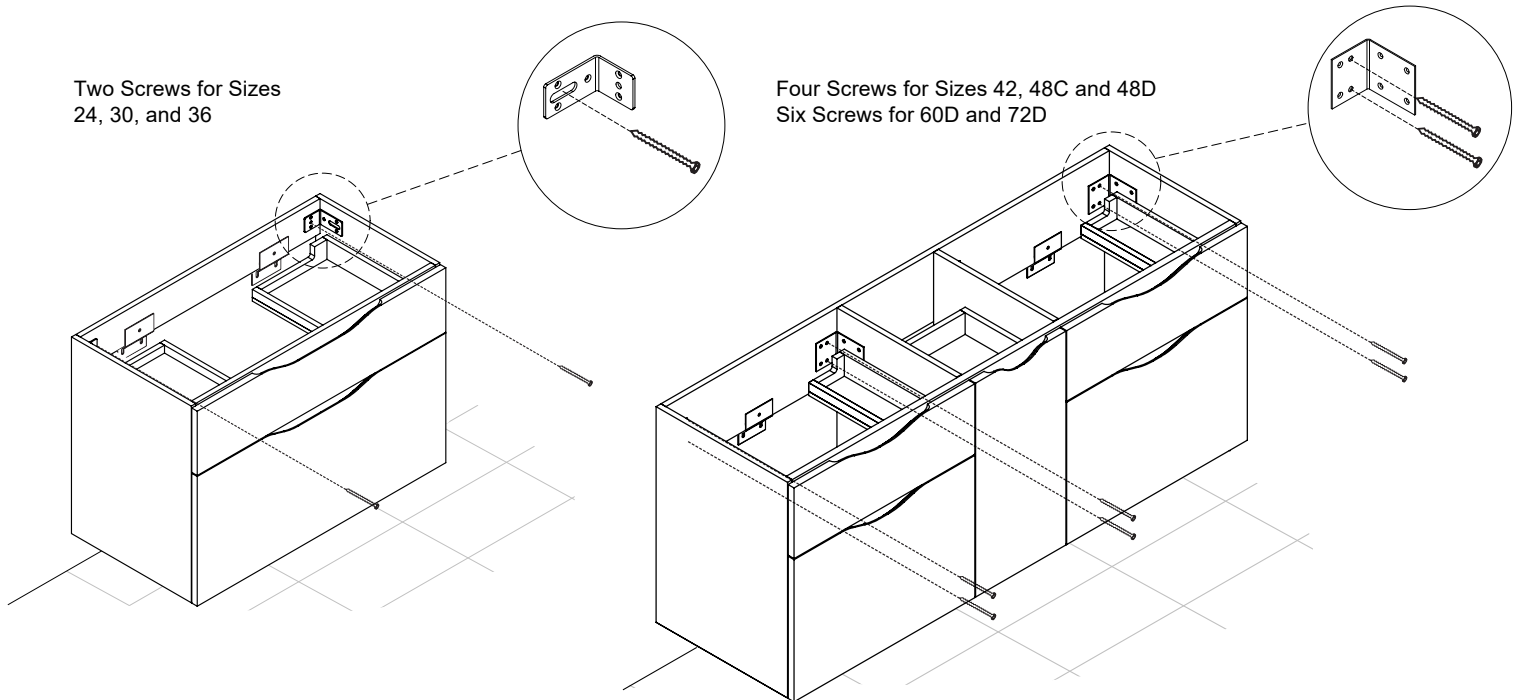
**The leveling brackets are only to level the vanity.
They are not designed for permanent support.
The cabinet needs to be secured to wood backing.**



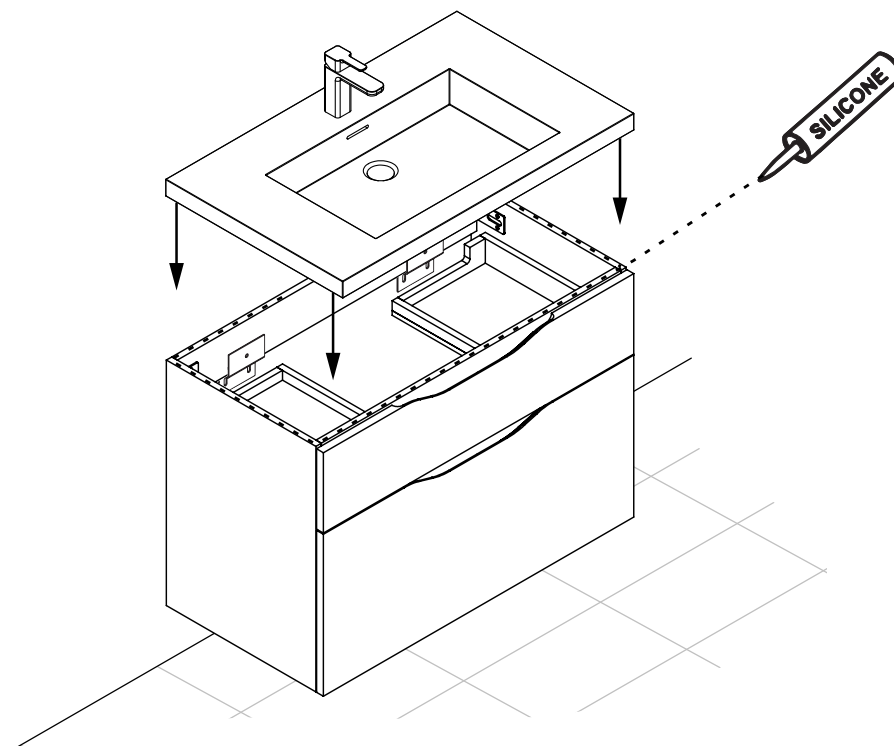
Bolano - WALL HUNG VANITY

Installation Guide

STEP 3: Secure vanity to wall reinforcement backing.



STEP 4: Install countertop with silicone and handles as shown below.



For clarification, please contact Madeli Customer Care at (800) 819-6988 Ext.1 or service@madeli.com
All dimensions are approximate and subject to standard tolerance. Specifications subject to change without prior notice.

10 | Page