

Job Name/Location:

Tag No.:

Date:

For: File Resubmit

PO No.:

Approval Other

Architect:

GC:

Engr:

Mech:

Rep:

(Company)

(Project Manager)

LS363HLV3

Single Zone Extended Piping Wall Mount

Outdoor Unit (ODU) - LSU363HLV3, Indoor Unit (IDU) - LSN363HLV3

Performance:**Cooling:**

Cooling Capacity (Min~Rated~Max) (Btu/h)	3,070~33,000~34,000
SEER2	19
EER2	10

SEER - Seasonal Energy Efficiency Ratio

EER - Energy Efficiency Ratio

Heating:

Heating Capacity (Min~Rated~Max) (Btu/h)	3,070~35,200~38,900
HSPF2	7.9
Max. Heating @ Indoor 70°F DB	
Outdoor 19°F DB / 17°F WB	35,740 (102%)
Outdoor 6°F DB / 5°F WB	30,890 (88%)
Outdoor -3°F DB / -4°F WB	26,820 (76%)

HSPF - Heating Seasonal Performance Factor

Cooling Nominal Test Conditions:

Indoor: 80°F DB / 67°F WB

Outdoor: 95°F DB / 75°F WB

Heating Nominal Test Conditions:

Indoor: 70°F DB / 60°F WB

Outdoor: 47°F DB / 43°F WB

Outdoor Unit:

MOP (A)	30
MCA (A)	23
Cooling / Heating Rated Amps (A)	15.35
Compressor (A)	15.1
Fan Motor (A)	0.25

MOP - Maximum Overcurrent Protection

MCA - Minimum Circuit Ampacity

Total Power Input:

Cooling Power Input (kW)	3.3
Heating Power Input (kW)	3.12

Piping:

Liquid Line (in., O.D.)	ø3/8 Flare
Vapor Line (in., O.D.)	ø5/8 Flare
Additional Refrigerant (oz./ft.)	0.38
Min. / Max. Pipe Length (ft.) ²	9.8 / 164
Piping Length (no add'l refriger., ft.)	24.6
Max. Elevation (ft.)	98.4

Features:

- 24-Hour on/off timer
- 4-Way auto swing
- Auto changeover
- Auto restart
- Jet cool/Jet heat
- Built-in low ambient standard, down to 14°F (cooling mode)
- Condensate Sensor Connection
- Inverter (variable speed compressor)
- Smart Diagnosis
- Washable Filter
- Self-cleaning indoor coil
- Built-in base pan heater
- Built-in Wi-Fi via Smart ThinQ app

Optional Accessories:

- ☐ Low Ambient Wind Baffle (Cooling operation to 0°F) - ZLABGP04A
- ☐ Simple Remote Controller - PREMT00U
- ☐ Premium Remote Controller - PREMTA000
- ☐ MultiSITE™ CRC1 - PREMTBVC0
- ☐ MultiSITE CRC1+ - PREMTBVC1
- ☐ MultiSITE Comm. Mgr. - PBACNBTR0A
- ☐ PI-485 - PMNFP14A1
- ☐ Dry Contact - PDRYCB100/300/400
- ☐ AC Smart 5 - PACSSA000
- ☐ ACP 5 - PACP5A000

For a complete list of available accessories, contact your LG representative.

For continual product development, LG reserves the right to change specifications without notice.

© LG Electronics U.S.A., Inc., Englewood Cliffs, NJ. All rights reserved. "LG Life's Good" is a registered trademark of LG Corp. /www.lghvac.com

**Operating Range:****Outdoor Unit:**

Cooling (°F DB)	14 ~ 118
Heating (°F WB)	-4 ~ +65

Indoor Unit:

Cooling (°F WB)	53 ~ 75
Heating (°F DB)	64 ~ 86

Electrical:

Power Supply (V/Hz/Ø)	208-230/60/1
-----------------------	--------------

System Data:

Refrigerant Type	R410A
Refrigerant Control	EEV
Refrigerant Charge (lbs.)	5.291
ODU Sound Pressure (Cooling / Heating) (±1 dB[A]) ³	55 / 58
IDU Sound Pressure Cooling (H/M/L/Sleep) (±1 dB[A]) ³	51 / 47 / 43 / 33
Heating (H/M/L) (±1 dB[A]) ³	51 / 47 / 43
ODU Net / Shipping Weight (lbs.)	147.9 / 160.3
IDU Net / Shipping Weight (lbs.)	40.8 / 48.9
Heat Exchanger Coating	GoldFin™

Fan:

ODU Type	Propeller
IDU Type	Cross Flow
Fan Speeds (Fan/Cool/Heat)	6 / 6 / 6
Quantity (ODU + IDU)	1 + 1
Motor/Drive	Brushless Digitally Controlled/Direct
ODU Max. Air Flow Rate (CFM)	2,295
IDU Air Flow Cooling, Max/H/M/L (CFM)	1,095 / 883 / 742 / 601
Heating, Max/H/M/L (CFM)	1,166 / 954 / 813 / 671
Dehumidification (pts./hr.)	5.49

Notes:

- Acceptable operating voltage: 187V-253V.
- Piping lengths are equivalent.
- Sound Pressure levels are tested in an anechoic chamber under ISO Standard 3745.
- All communication / connection (power) cable from the outdoor unit to the indoor unit is field supplied and must be a minimum of four-conductor, 14 AWG, stranded, shielded or unshielded (if shielded, it must be grounded to the chassis of the outdoor unit only), and must comply with applicable local and national codes.
- See Engineering Manual for sensible and latent capacities.
- Power wiring cable size must comply with the applicable local and national code.
- The indoor unit comes with a dry helium charge.
- This data is rated 0 ft. above sea level, with 24.6 ft. of refrigerant line and a 0 ft. level difference between outdoor and indoor units.
- Must follow installation instructions in the applicable LG installation manual.



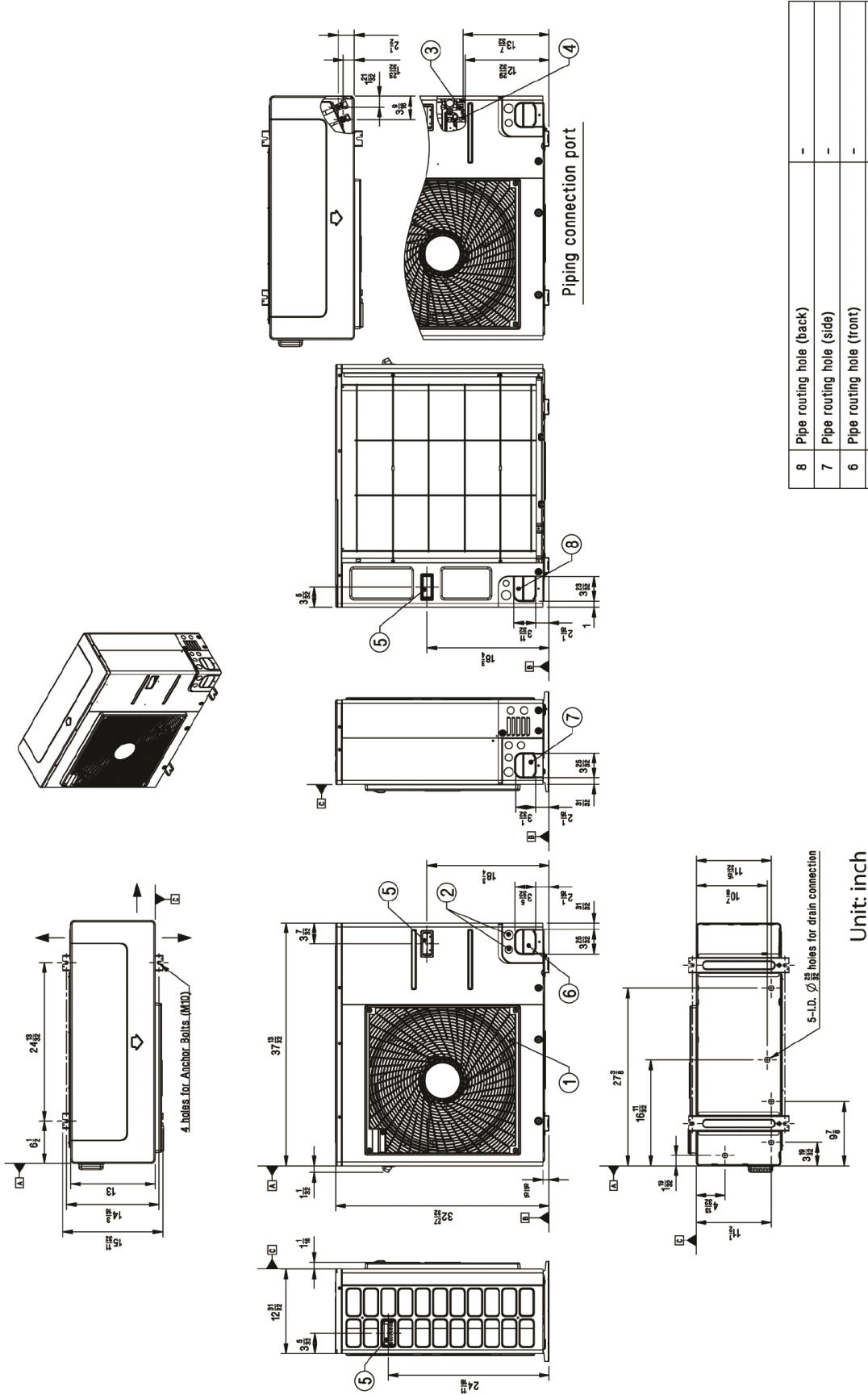
SB_SZ_WM_ExtendedPiping_LS363HLV3_2022_10_19_140721

Page 1 of 3

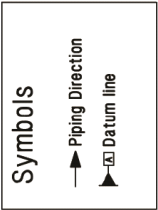
LS363HLV3
Single Zone Extended Piping Wall Mount
Outdoor Unit (ODU) - LSU363HLV3, Indoor Unit (IDU) - LSN363HLV3



Tag No.: _____
Date: _____
PO No.: _____



Unit: inch



8	Pipe routing hole (back)	-	
7	Pipe routing hole (side)	-	
6	Pipe routing hole (front)	-	
5	Handle	-	
4	Liquid Pipe Connection	Flare joint	
3	Gas Pipe Connection	Flare joint	
2	Power and communication cable Hole	-	
1	Air Outlet	-	
No.	Part Name	Description	

