

**TrueFRESH™**  
Balanced Ventilation Systems

**Honeywell**



**A Breeze To Install.  
A Breeze To Balance.**

# Ventilation Just Got A Whole Lot Easier

Simplify Installation With TrueFRESH™



## Installing balanced ventilation systems

can be time consuming – from the overhead hanging and ducting, to measuring airflows, to the opening/closing of dampers to balance the system and meet code.

## TrueFRESH is a True Time Saver

Because Honeywell TrueFRESH Balanced Ventilation Systems eliminate the need for overhead ducting, and balance without adjusting dampers, they change everything when it comes to time-consuming installation. And they will change the way you think about your ventilation business.



## The Importance of Balancing

The goal of a ventilation system is to balance the exchange of the home's stale air with fresh outside air while recovering as much of the heating or cooling energy as possible. Should the supply air stream coming in be stronger than the return air going out — or vice versa — it can have a negative impact on the home and the people living inside.

Too much positive pressure (stronger air coming in) can lead to the cracking of walls or freezing of locks, while too much negative pressure (stronger air going out) can lead to mold and air quality issues. Having a properly balanced ventilation system is also required to meet home building codes.

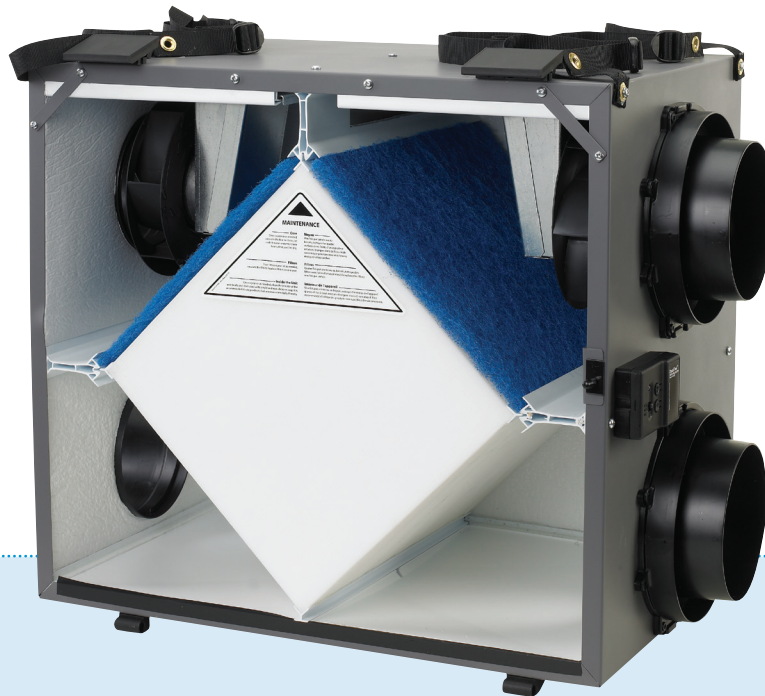




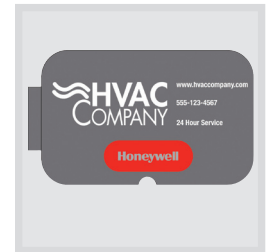
①



③



④



⑤

Along with the timesaving installation and simplified balancing, TrueFRESH offers an array of other benefits that make it the clear HRV/ERV choice for you and your customers.

- ① **Removable Duct Collars:** Spend less time on the ladder by easily connecting the ductwork to the collars away from the unit before it's hung, and then sliding the collars back into place once ducted.
- ② **Simplified Balancing:** Two variable-speed motors — one for each air stream — work with the integrated speed control so installers can adjust the speed of each motor up and down to easily balance the system. This eliminates the need for adjusting dampers.
- ③ **Adjustable Hanging Straps:** Just like tightening or loosening straps on a backpack, these straps make it easy to raise, lower and level the unit into place.
- ④ **Centralized Wiring and Speed Control:** All TrueFRESH wiring is done from the integrated control box, which is also used to control operation and speed. Ventilate the home according to the needs of your customers with options for On, Intermittent or Off.
- ⑤ **Customizable:** Generate lasting relationships with your customers by adding your company name and logo as a reminder of who to call for system service.
- ⑥ **Compact Size:** Streamlined, lightweight design is easy to lift, easy to hang and easier to fit in more applications.
- ⑦ **Meets ASHRAE 62.2 Standards:** Your assurance of meeting code requirements.
- ⑧ **5-Year Warranty:** Peace of mind for you and your customers.
- ⑨ **2-in-1 Ventilation Hood:** For the compact model, intake and exhaust are combined into one hole for easier installation.
- ⑩ **Integrated Pressure Ports:** For the compact model, pressure is easily measured through the built in pressure points in the duct collars.

# TrueFRESH™ Balanced Ventilation Systems

Part Number	Description
VNT5070H1000	70 CFM Heat Recovery Ventilation System
VNT5070E1000	70 CFM Energy Recovery Ventilation System
VNT5150H1000	150 CFM Heat Recovery Ventilation System
VNT5150E1000	150 CFM Energy Recovery Ventilation System
VNT5200H1000	200 CFM Heat Recovery Ventilation System
VNT5200E1000	200 CFM Energy Recovery Ventilation System
50063805-009	2 in 1 Ventilation Hood for 70 CFM Model

## Control Options

TrueFRESH systems can be controlled with any available ventilation control or thermostat integrated with ventilation control, including:



**Prestige® Comfort Systems and VisionPRO® Series Controls:** Both provide ventilation control from a single device, effortless programming and a wide range of comfort and energy-saving features.



**TruelAQ®:** A single control that manages whole-house humidifiers, dehumidifiers and ventilation systems.

## The Importance of Sizing

ASHRAE Standard 62.2 defines ventilation requirements to provide acceptable indoor air quality in residential buildings. This table shows the required amount of outdoor air to be continuously introduced into the home based on square footage and number of bedrooms.

### ASHRAE Ventilation Sizing Chart

Table 4.1a (I-P) Ventilation Air Requirements, cfm					
Floor Area (ft²)	Bedrooms				
	0 - 1	2 - 3	4 - 5	6 - 7	> 7
< 1500	30	45	60	75	90
1501 – 3000	45	60	75	90	105
3001 – 4500	60	75	90	105	120
4501 – 6000	75	90	105	120	135
6001 – 7500	90	105	120	135	150
> 7500	105	120	135	150	165

\* Table 4.1a may also be used to size continuous ventilation

### Learn More

Call toll-free **1-800-328-5111**, e-mail [info@honeywell.com](mailto:info@honeywell.com)

or visit [www.forwardthinking.honeywell.com](http://www.forwardthinking.honeywell.com).

### Automation and Control Solutions

In the U.S.:

Honeywell

1985 Douglas Drive North

Golden Valley, MN 55422-3992

In Canada:

Honeywell Limited

35 Dynamic Drive

Toronto, Ontario M1V 4Z9

1-800-328-5111

[www.honeywell.com](http://www.honeywell.com)

50-1559 RL  
October 22, 2012  
© 2012 Honeywell International Inc.



# Honeywell