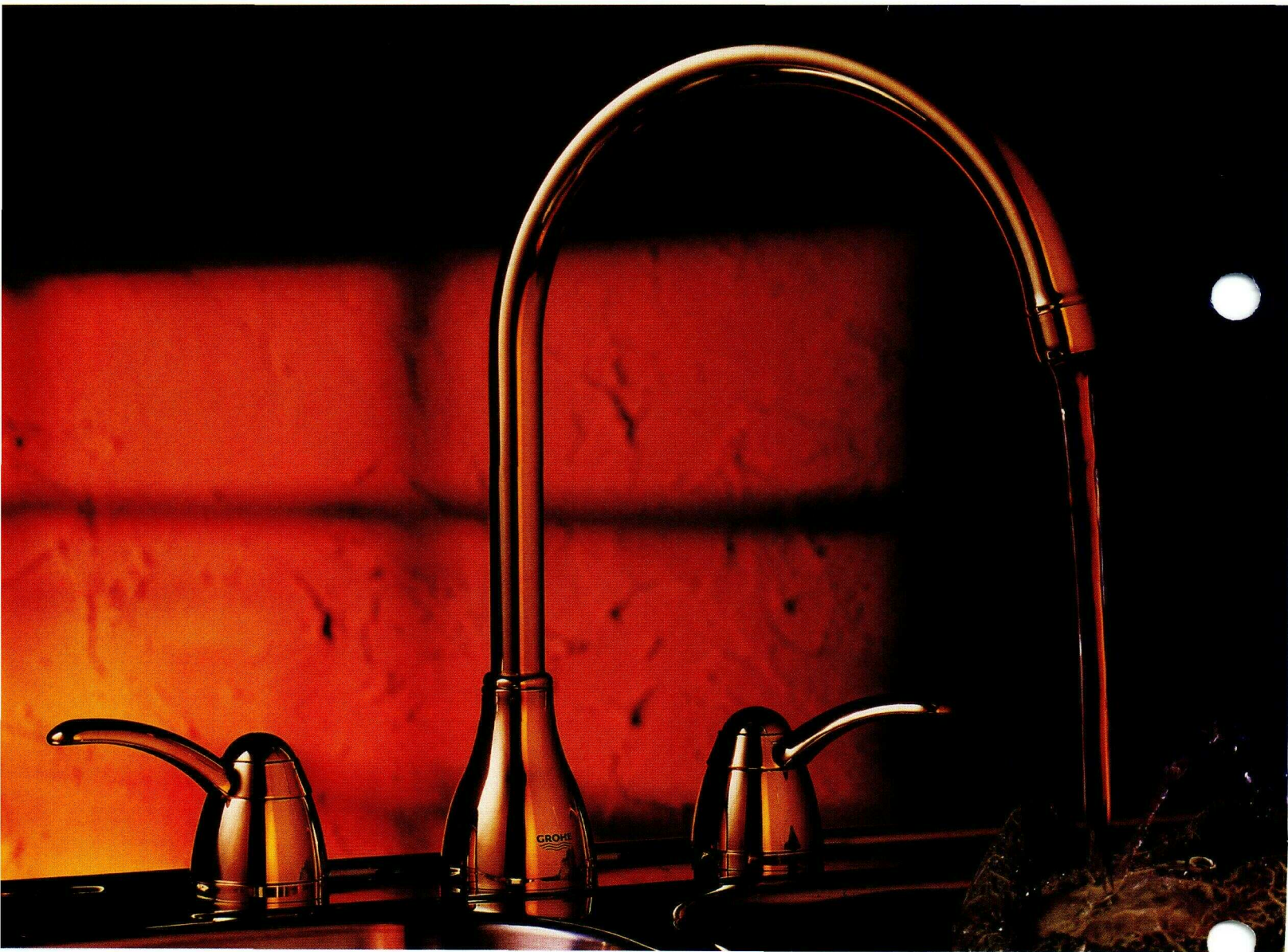
[illegible]

Talia...elegantly Continental

Talia®...a truly unique blending of contemporary motifs and Renaissance fluidity. GROHE's Talia kitchen faucets are distinguished by the beautifully arched details of their spouts and their handles. Talia is characterized with a single word...graceful.



Technological Innovation... the GROHE commitment to quality.

From a technical point of view, faucets and shower products are considerably more complex than you might imagine. If a faucet does exactly what you expect it to do -- provide water with perfect reliability, regardless of the conditions it's required to operate in -- what does it matter how much effort went into its design?

At GROHE, we know it matters a lot.

Everything we do is geared to creating faucets that will function perfectly, not only today, but for many years to come.

Every GROHE component is engineered and manufactured to show minimum signs of wear under the most extreme, abusive conditions imaginable. From washers and snap couplings to springs, screws and aerators, every component is essential to the extraordinary durability and operation of GROHE faucets.

Take a close look... GROHE's attention to detail makes the difference

- State-of-the-art ceramic disc cartridges for smooth and precise water control.
- Extreme low noise operation, built to meet strict European noise standards.
- Solid cast brass construction.
- GROHE has established the worldwide standard for shower safety valves. Reliable, high performance thermostatic temperature control valves or pressure balance valves offer two options for protection against accidental scalding in the shower.
- Integrated atmospheric vacuum breaker simplifies and streamlines installation of kitchen pull-outs to meet local code requirements. (Ladylux plus, Ladylux, Europlus, and Eurowing)
- Durable, long lasting decorative finishes. Tightly controlled water flow pattern minimizes splashing.
- German engineered to incredibly close tolerances for consistent, long lasting, and reliable performance.
- Optional escutcheons and soap/lotion dispensers in matching finishes allow several installation alternatives.

Technical Specifications Table of Contents

CATEGORY	SECTION
Index	1
Kitchen Faucets	2
Bath (Lavatories, Bidets, Electronic Faucets, and Accessories)	3
Tub Fillers	4
Shower Safety Valves	5
Shower / Tub Combinations	6
Shower Products	7
Miscellaneous (Special Application Faucets)	8



FAUCET TECHNOLOGY

General Information

GROHE products listed here are organized according to product use. The Table of Contents and Product Number Index will help you to locate products easily either by application or by specific product number.

For further information on specifications, commercial applications, or specific installation requirements contact your local GROHE representative or GROHE Technical Customer Service at 1-800-44-GROHE.

Codes and Standards Compliance

GROHE products are manufactured to meet or exceed all applicable codes and standards including:

- ASME/ANSI A112.18.M
- ANSI/NSF Standard 61, Section 9
- All major model and state plumbing codes

ISO 9001 Certification

GROHE was the first international faucet manufacturer to be awarded DIN ISO 9001 Certification. The ISO (International Standards Organization) standard 9001 covers the quality assurance activities in not only manufacturing and assembly, but also in the areas of management, marketing, engineering, order handling and customer service. In order to qualify for ISO 9001 certification, GROHE's Quality Assurance System had to conform to all of the strict requirements of the standard and must have been audited and inspected by an independent internationally accredited auditing organization (TUV Cert). To maintain its certification, GROHE must meet a yearly control audit, and must reapply for a complete certification audit/inspection every three years.

Water Conservation

To help conserve our precious natural resources, all GROHE kitchen, lavatory, and bar faucets (excluding non-applicable commercial products) are restricted to 2.2 gpm at 60 psi (2.5 gpm at 80 psi or 9.5 lpm) to conserve water.

All shower heads and hand showers unless otherwise indicated are restricted to 2.5 gpm at 80 psi (9.5 lpm).

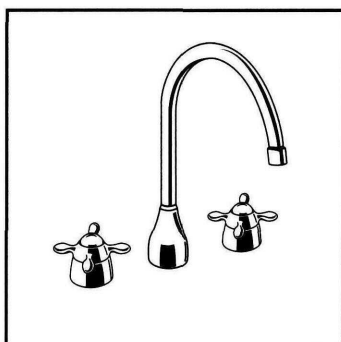
Warranty

All GROHE products carry a limited warranty. See the GROHE Price List for complete details.

Important Notice

GROHE products are distributed in over 185 countries. **The product information contained in this catalog applies to those GROHE products sold in North America only.**





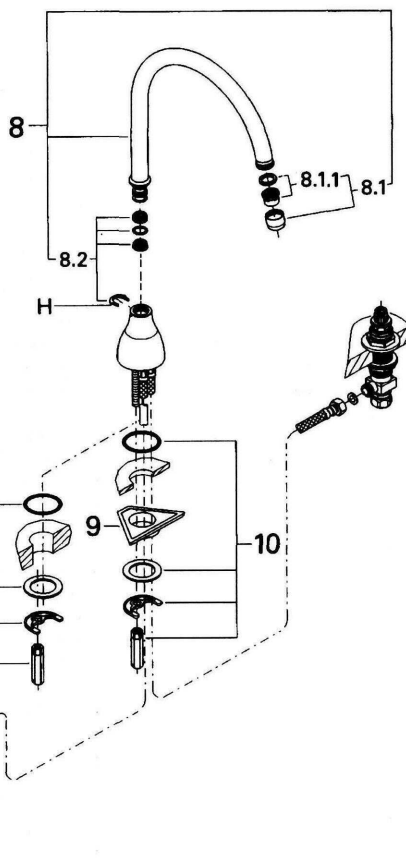
PRODUCT NO.

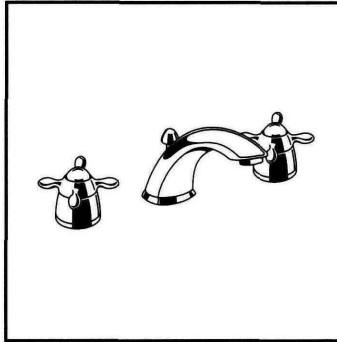
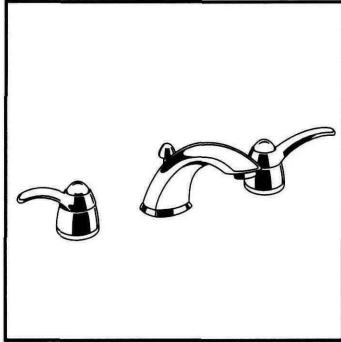
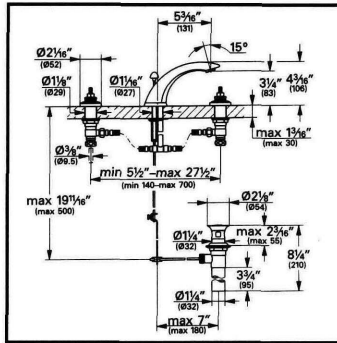
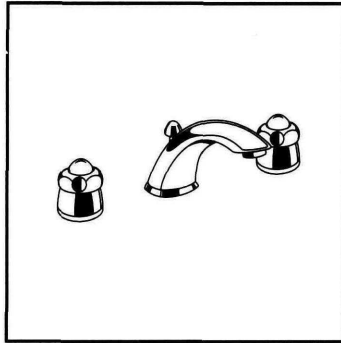
20 707 000
20 707 R00
20 707 L00
20 707 W00

Chrome	18 753 000
Chrome/P. Brass	18 753 IR0
Polished Brass	18 753 R00
White	18 753 L00
White/P. Brass	18 753 LR0
Bone	18 753 W00

Chrome	18 754 000
Chrome/P. Brass	18 754 IR0
Polished Brass	18 754 R00
White	18 754 L00
White/P. Brass	18 754 LR0
Bone	18 754 W00

Chrome	18 750 000
Chrome/P. Brass	18 750 IR0
Polished Brass	18 750 R00
White	18 750 L00
White/P. Brass	18 750 LR0
Bone	18 750 W00

[illegible]



DESCRIPTION

Talia Two-Handle Lavatory Wideset

Less handles
Ceramic cartridges
Cast brass spout
Pop-up drain

2.5 gpm at 80 psi (9.5 lpm)

COLOR

Chrome
Chrome/
Polished Brass
Polished Brass
White
White/
Polished Brass

PRODUCT NO.

20 892 000
20 892 IR0
20 892 R00
20 892 L00
20 892 LR0

Talia Corona Ring Handles

Sold in pairs

Chrome
Chrome/P. Brass
Polished Brass
White
White/P. Brass

18 753 000
18 753 IR0
18 753 R00
18 753 L00
18 753 LR0

Talia Lever Handles

Sold in pairs

Chrome
Chrome/P. Brass
Polished Brass
White
White/P. Brass

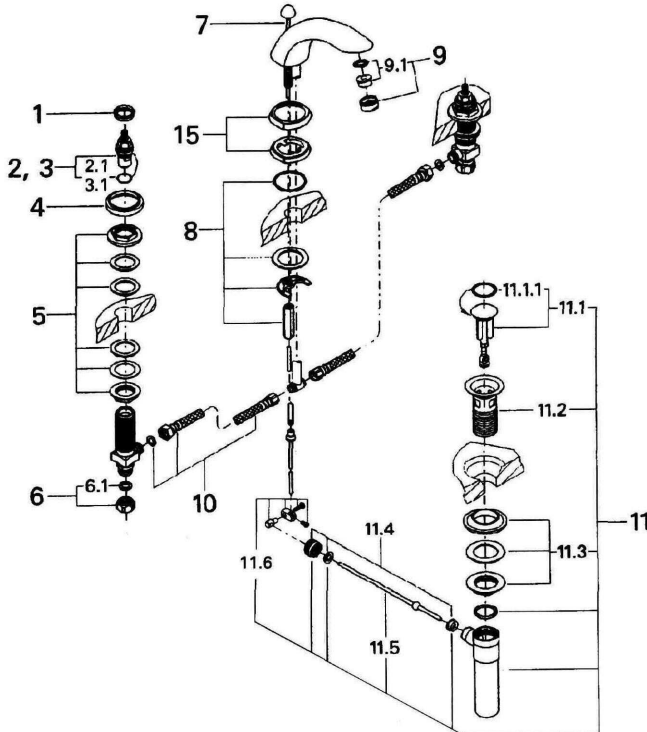
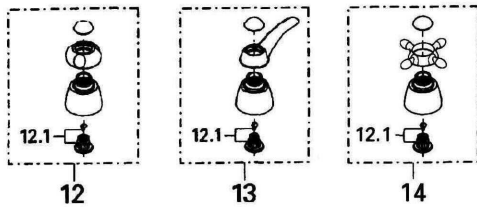
18 754 000
18 754 IR0
18 754 R00
18 754 L00
18 754 LR0

Talia Cross Handles

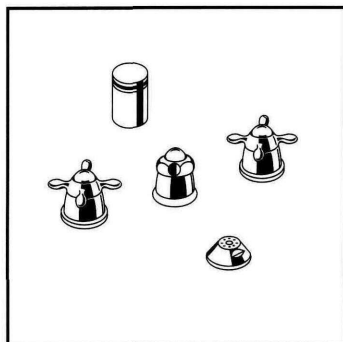
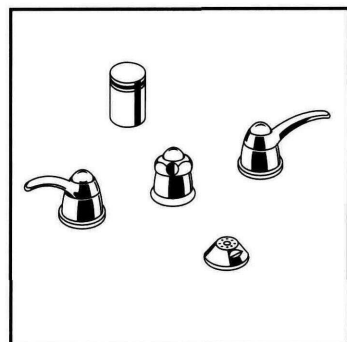
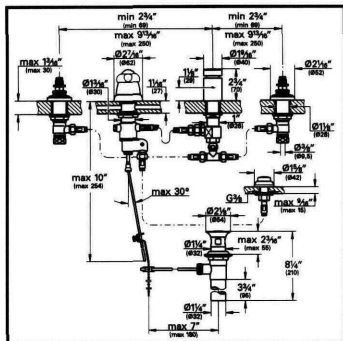
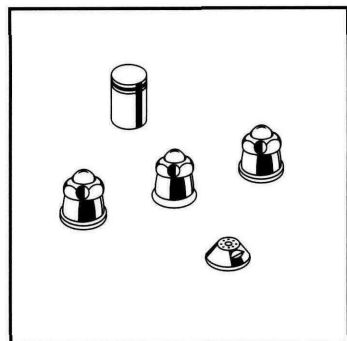
Sold in pairs

Chrome
Chrome/P. Brass
Polished Brass
White
White/P. Brass

18 750 000
18 750 IR0
18 750 R00
18 750 L00
18 750 LR0



Pos. No.	Spare part Description	Product No.	Pcs.
	20892		
1	Thrust ring	03070	1
2	Ceramic cartridge 90°, right	45882	1
2.1	Body seal O-ring	03924	1
3	Ceramic cartridge 90°, left	45883	1
3.1	Body seal O-ring	03924	1
4	Escutcheon	45822	1
5	Mounting set side valve	45025	1
6	Connection nut set	12902	1
6.1	Washer	01389	1
7	Lift rod	45823	1
8	Mounting set spout	46122	1
9	Flow regulator M24x1	13955	1
9.1	Flow regulator set	45220	1
10	Connection hose	45442	1
11	Pop-up drain	28957	1
11.1	Stopper	45324	1
11.1.1	Stopper o-ring	01147	1
11.2	Flange	01153	1
11.3	Shank nut and bushing	45266	1
11.4	Nut and bushings	45265	1
11.5	Ball rod	45264	1
11.6	Toggle lever	45485	1
15	Escutcheon complete	45825	1
	Special accessories		
12	Corona ring handle	45818	1
12.1	Handle connection set	45186	1
13	Lever handle	45820	1
14	Cross handle	45414	1



DESCRIPTION

Talia Wideset Bidet
Less handles
Vertical spray
Combination transfer valve/
pop-up lift rod
Vacuum breaker

2.5 gpm at 80 psi (9.5 lpm)

COLOR

Chrome 24 667 000
Chrome/ Polished Brass 24 667 IR0
Polished Brass 24 667 R00
White 24 667 L00
White/ Polished Brass 24 667 LR0

PRODUCT NO.

Talia Corona Ring Handles
Sold in pairs

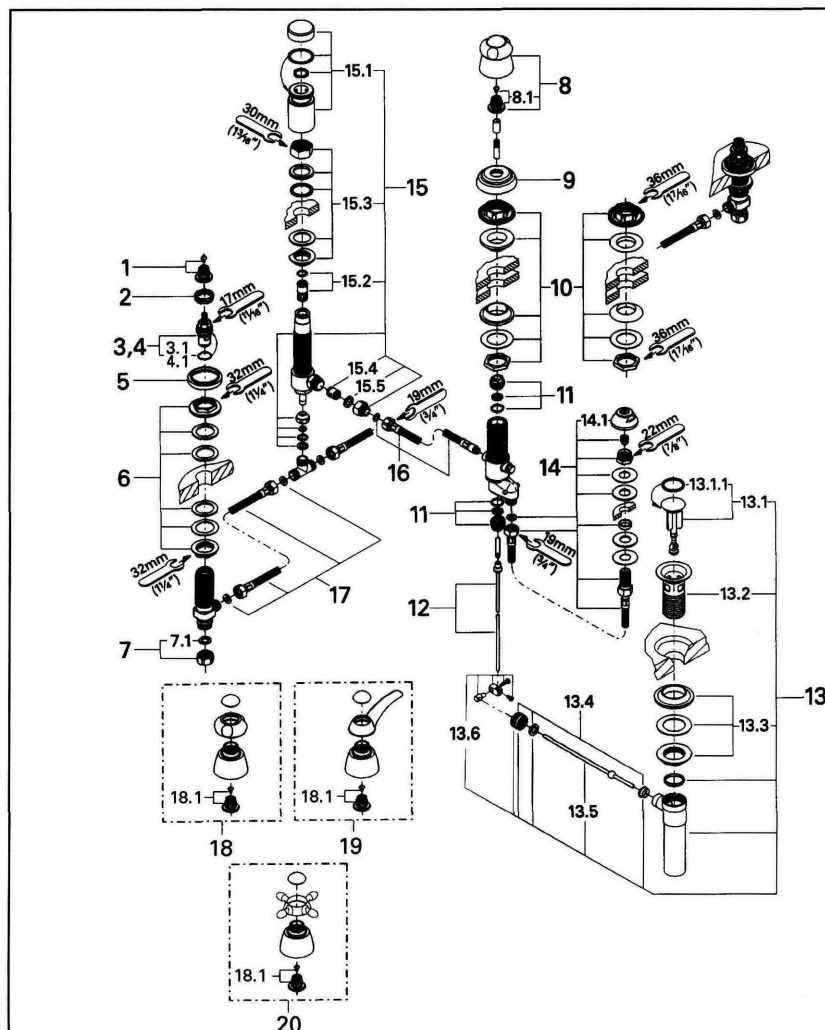
Chrome 18 753 000
Chrome/P. Brass 18 753 IR0
Polished Brass 18 753 R00
White 18 753 L00
White/P. Brass 18 753 LR0

Talia Lever Handles
Sold in pairs

Chrome 18 754 000
Chrome/P. Brass 18 754 IR0
Polished Brass 18 754 R00
White 18 754 L00
White/P. Brass 18 754 LR0

Talia Cross Handles
Sold in pairs

Chrome 18 750 000
Chrome/P. Brass 18 750 IR0
Polished Brass 18 750 R00
White 18 750 L00
White/P. Brass 18 750 LR0



Pos. No.	Spare part Description	Product No.	Pcs.
	24667		
1	Handle connection set	45186	1
2	Thrust ring	03070	1
3	Ceramic cartridge 1/2" 90°, right	45882	1
3.1	O-ring	03924	1
4	Ceramic cartridge 1/2" 90°, left	45883	1
4.1	O-ring	03924	1
5	Escutcheon - side valve	45822	1
6	Mounting set side valve	45025	1
7	Connection nut set	12902	1
7.1	Washer	01389	1
8	Diverter handle	45818	1
8.1	Handle connection set	45186	1
9	Escutcheon - diverter	02281	1
10	Mounting set diverter	45026	1
11	Connection nipple	45027	1
12	Lift rod	06085	1
13	Pop-up drain	28957	1
13.1	Stopper	45324	1
13.1.1	Stopper o-ring	01147	1
13.2	Flange	01153	1
13.3	Shank nut and bushing	45266	1
13.4	Nut and bushings	45265	1
13.5	Ball rod	45264	1
13.6	Toggle lever	45485	1
14	Vertical spray	24210	1
14.1	Spray face plate	02664	1
15	Vacuum breaker	45852	1
15.1	Cover and tube	45853	1
15.2	Double ball vacuum breaker	45854	1
15.3	Mounting set	45855	1
15.4	Check valve	08565	1
15.5	Washer	01389	1
16	Connection hose 12 3/4"	45154	1
17	Connection hose 10"	45856	1
	Special accessories		
18	Corona ring handle	45818	1
18.1	Handle connection set	45186	1
19	Lever handle	45820	1
20	Cross handle	45414	1