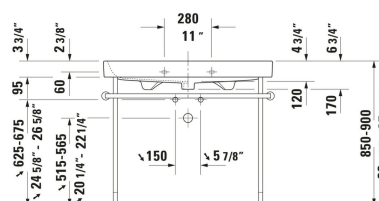
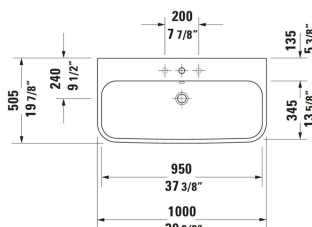


## Happy D.2 Wall Mounted Sink # 2318100000 / 2318100030

| < 39 3/8 " > |



Wall Mounted Sink	Dimension	Weight	Order number
Rectangular, Number of basins: 1 Middle, Includes faucet deck: Yes, Overflow: Yes, Includes overflow clip, Underside glazed, Back side glazed: No, 39 3/8 ", ADA: Yes, cUPC listed: Yes			
<b>Colors</b>			
00 White			
<b>Variant</b>			
● White High Gloss, Number of faucet holes: 1 Middle		59.084 lb	2318100000
●●● White High Gloss, Number of faucet holes: 3 Middle, Soap dispenser position: Left		59.084 lb	2318100030
<b>Infobox</b>			
To attach washbasins from a size of 1000 mm, two attachments with article no. # 6951000000 are required			
<b>Suitable products</b>			
Console Chrome, Installation Type: Floorstanding, Wall installation, Adjustable height: 2 ", Hardware included: Yes, Reversible: No, Includes towel rail: Yes, 38 1/4 x 19 3/8 "	38 1/4 x 19 3/8 "		003076

All drawings contain the necessary measurements which are subject to standard tolerances. They are stated in inch & mm and are non-binding. Exact measurements, in particular for customized installation scenarios, can only be taken from the finished ceramic piece.