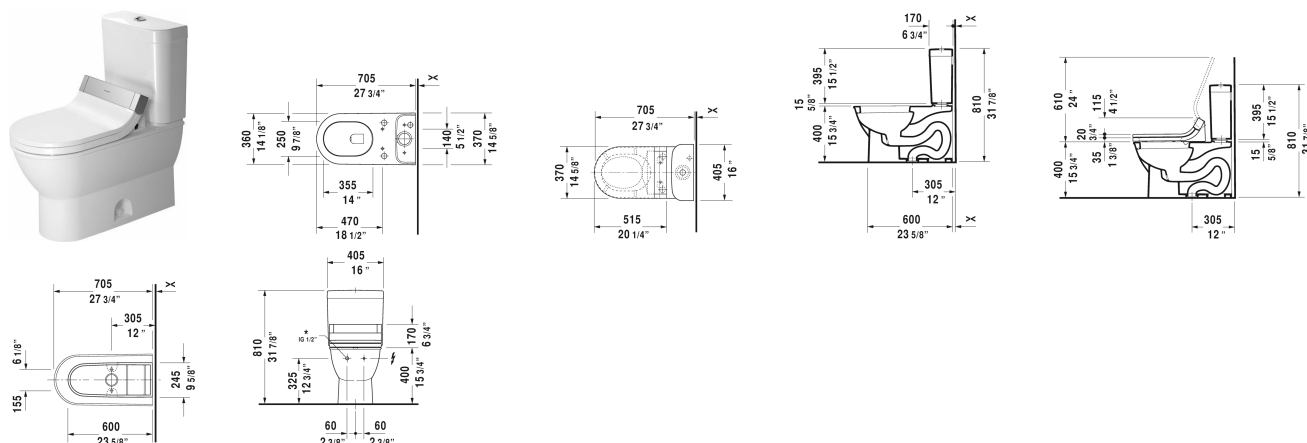


Darling New Two-piece toilet for SensoWash® # 212651..00

| < 14 5/8" Inch > |



| Two-piece toilet for SensoWash® | Dimension | Weight | Order number |
|--|------------------------|---------|--------------|
| (without tank), only in combination with SensoWash, syphonic, 12" rough-in, connecting elements for SensoWash with concealed connections included, vertical outlet, cUPC® listed*, 1.28 gpf | | | |
| Colors | | | |
| 00 White 20 HygieneGlaze (an antibacterial ceramic glaze that provides almost indefinite effectiveness) | | | |
| Variant | | | |
| 🔹 | 14 5/8" x 27 1/2" Inch | 78.3 lb | 212651..00 |
| Infobox | | | |
| * Complies with following standards: ASME A112.19.2/CSA B45.1 | | | |
| Sanitary ceramics with the special WonderGliss surface finish will remain clean and attractive-looking for a long time to come. When ordering WonderGliss please add a "1" as eleventh digit to the model number. | | | |
| Mounting set for One-Piece and Two-Piece toilets, outlet 3/8" - male thread, wall connection 1/2" - female thread, 1/2", North American version | 17 3/4" Inch | 1.1 lb | 001417 |
| Suitable products | | | |
| Tank with single flush piston valve, top flush, bottom left supply, cUPC® listed*, 1.28 gpf, 16" x 6 7/8" Inch | 16" x 6 7/8" Inch | | 093120 |

Darling New Two-piece toilet for SensoWash® # 212651..00

|< 14 5/8" Inch >|

| | | |
|--|-------------------------------|---------------|
| <p>SensoWash® Starck C shower-toilet seat for ME by Starck, Starck 2, Starck 3 and Darling New* rear-, front and oscillating wash, individual adjustment of water-, air- and seat surface temperature as well as nozzle position and jet strength, power actuated lid and seat, night light, 2 individually programmable user profiles, remote control included, self-cleaning wand, on / off-button, with concealed connections, Quick release: easy seat unit removal and attachment, 14 5/8" x 20 1/4" Inch</p> | <p>14 5/8" x 20 1/4" Inch</p> | <p>610001</p> |
|--|-------------------------------|---------------|

All drawings contain the necessary measurements which are subject to standard tolerances. They are stated in inch & mm and are non-binding. Exact measurements, in particular for customized installation scenarios, can only be taken from the finished ceramic piece.