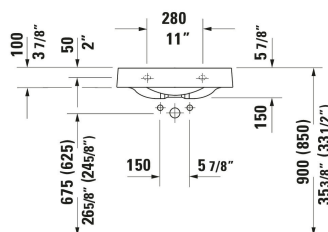
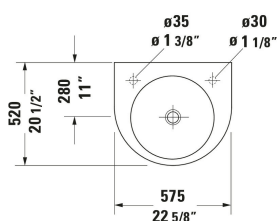


Architec Wall Mounted Sink # 0449580000 / 0449580008 / 0449580009 / 0449580023

|< 22 5/8 " >|



Wall Mounted Sink	Dimension	Weight	Order number
Semi-circular, Includes faucet deck: Yes, Overflow: No, Underside glazed, Back side glazed: No, 22 5/8 ", cUPC listed: Yes			
Colors			
00 White			
Variant			
● ● White High Gloss, Number of basins: 1 Middle, Soap dispenser position: Right, Number of pre-marked faucet holes: 1		33.510 lb	0449580000
● White High Gloss, Number of basins: 1 Middle, Number of faucet holes: 1 Right		33.510 lb	0449580008
● White High Gloss, Number of basins: 1 Middle, Number of faucet holes: 1 Left		33.510 lb	0449580009
● ● White High Gloss, Number of basins: 1 Middle, Number of faucet holes: 1 Left, Soap dispenser position: Right		33.510 lb	0449580023
Suitable products			
Soap Dispenser , Ø 1 1/8 "	Ø 1 1/8 "		009972

All drawings contain the necessary measurements which are subject to standard tolerances. They are stated in inch & mm and are non-binding. Exact measurements, in particular for customized installation scenarios, can only be taken from the finished ceramic piece.