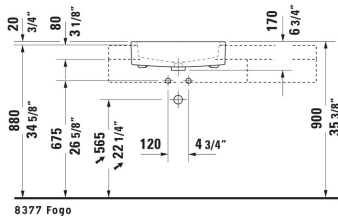
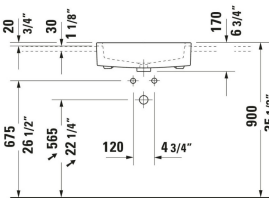
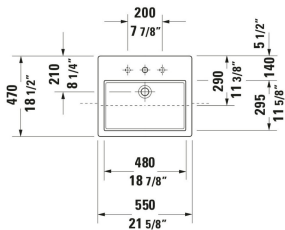
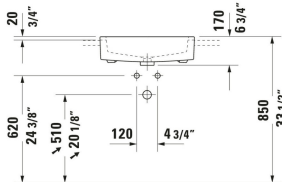


Vero Semi-Recessed Sink # 0314550000 / 0314550030

| < 21 5/8 " > |



8377 Fogo



Semi-Recessed Sink	Dimension	Weight	Order number
Installation Type: Installation, 21 5/8 "x18 1/2 " , Includes faucet deck: Yes, Overflow: Yes, Installation Type: Drop-in installation, Includes hardware for installation in wooden consoles, Underside glazed, cUPC listed: Yes			
Colors			
00 White			
Variant			
● White High Gloss, Number of faucet holes: 1		38.801 lb	0314550000
●●● White High Gloss, Number of faucet holes: 3, Soap dispenser position: Left		38.801 lb	0314550030

All drawings contain the necessary measurements which are subject to standard tolerances. They are stated in inch & mm and are non-binding. Exact measurements, in particular for customized installation scenarios, can only be taken from the finished ceramic piece.