



## The Davinci Collection

AF Design Lab

## Gotham

3-Hole Deck Mounted Lavatory Faucet

## GAN-TRI-100-5-\*

Specification

### Product Specifications

Series	Gotham
Spout	GAN-5 (Gansevoort 5")
Handle	TRI (Tribeca)
Mounting	(3) Holes @ Ø1-3/8" (35mm)
Features	Drain Included
	Zero-Lead Brass
	Ceramic Disc Cartridge
	1.2 gpm

### \*Finish

For a selection of available standard finishes, please contact your AF Account Manager, or consult [www.davincibath.com](http://www.davincibath.com). Custom finishes upon request.

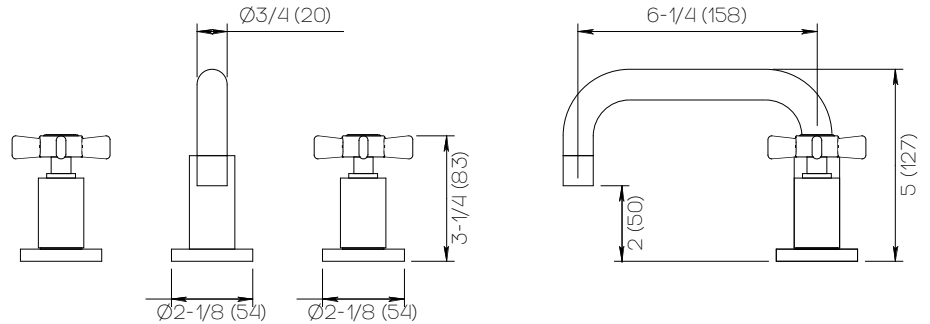
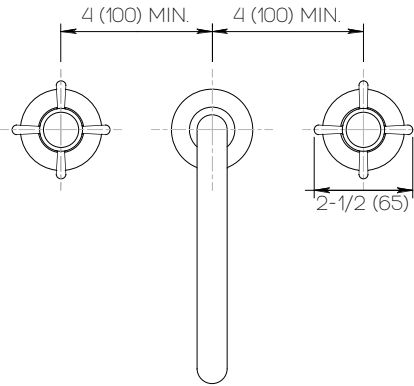
### Applicable Codes & Standards

Specified model meets or exceeds the following:

- ASME A112.18.1/CSA B125.1
- US Federal and State material regulations.
- EPA WaterSense®

### Important

Dimensions are nominal and may vary within the range of tolerances established by ANSI Standard A112.18.1. These measurements are subject to change or cancellation. No responsibility is assumed for use of superseded or voided pages.



### Dimensions

Inches (mm)