



#### Product Specifications

Series	Flat Round
Spout	D05
Handle	H05
Mounting	(3) Holes @ $\varnothing 1\text{-}3/8"$ (35mm)
Features	Drain Included
	Zero-Lead Brass
	Ceramic Disc Cartridge
	1.2 gpm

#### \*Finish

For a selection of available standard finishes, please contact your AF Account Manager, or consult [www.davincibath.com](http://www.davincibath.com). Custom finishes upon request.

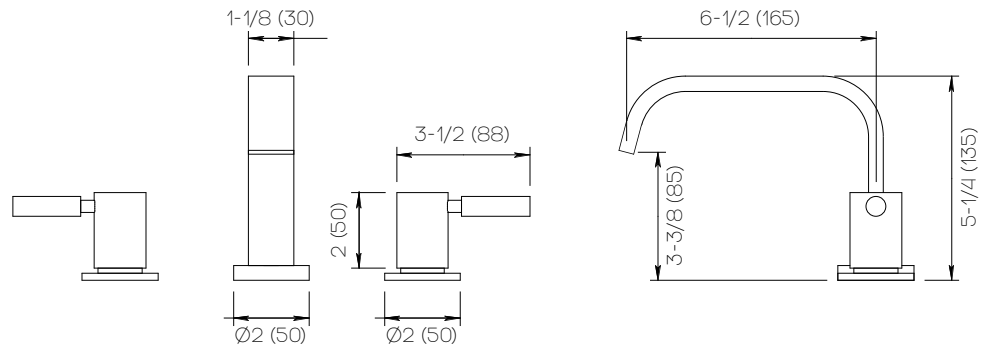
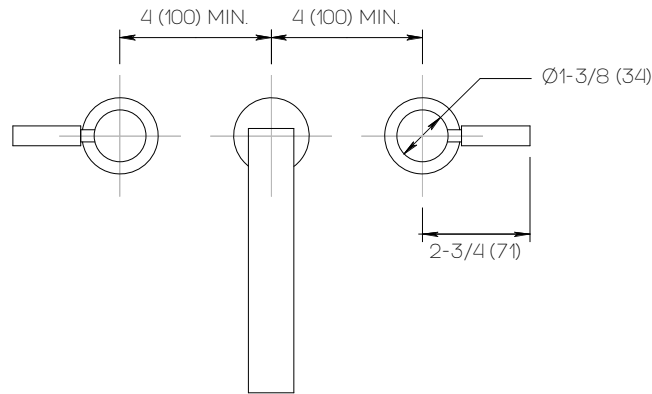
#### Applicable Codes & Standards

Specified model meets or exceeds the following:

- ASME A112.18.1/CSA B125.1
- US Federal and State material regulations.
- EPA WaterSense®

#### Important

Dimensions are nominal and may vary within the range of tolerances established by ANSI Standard A112.18.1. These measurements are subject to change or cancellation. No responsibility is assumed for use of superceded or voided pages.



**Dimensions**    Inches (mm)