

FXV2-0700 + FV2D-0700 SPECIFICATIONS

45° FENIX collection

UP series 700 wall-mount vanity

FEATURES:

- Wall-mounted vanity with single drawer, open bottom shelf + integrated basin
- Integrated infinity-style basin with central drain concealed by a sloped cover, without overflow
- Top + lower angles feature a unique 45 degree join
- Drawer organization included: 1 storage compartment
- Slim inner drawer designed for plumbing clearance
- Recessed integral finger pull channel with Hettich soft-close system
- One continuous bracket along the backside for ease of installation: allows for easy retrofitting/hitting studs (Refer to the Installation Guide)
- Wall-mount design opens space & facilitates easy cleaning
- Italian-crafted for superior quality



SPECIFICATIONS:

Dimensions:	(WHD) 27¾" x 19¾" x 20" (705mm x 500mm x 510mm)*
Shipping Dimensions	(WHD) 32" x 23¾" x 24¼" (815mm x 600mm x 615mm)
Warranty:	Five Year Limited Warranty (Residential) One Year Warranty (Commercial)

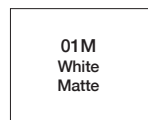
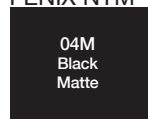
ACCESSORIES (SOLD SEPARATELY):

- Recommend Geberit siphon trap: 151.116.11.1, 151.117.11.1 or 151.118.11.1

COLORS/FINISHES:

A VANITY FRAME

FENIX NTM™



B DRAWER FRONT

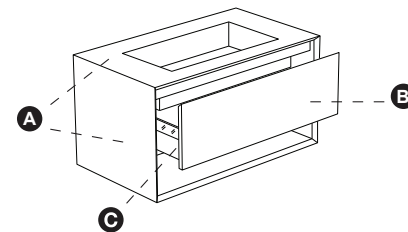
FENIX NTM™



WOOD



LACQUER



Note: Wood is a natural product, therefore any variations in color, vein or finish on wood is considered part of the wood's value and craftsmanship.

A FENIX NTM®

B An innovative Nanotech material: a smart surface, extremely matte, fingerprint proof, soft to the touch but resistant to rubbing, abrasions, impacts, and thermally self-heals micro-scratches.

B Wood - Natural Oak

Constructed of real massif wood + wood veneer finish

Wood -Vintage Oak

Wood veneer on a multi layer birch wood panel

Wood - Distressed Oak/Everest

Solid wood three layer oak

Lacquer

Engineered wood (MDF) panel IDROCARB

C Solid rust free powder coating metal drawer with side glass
Hettich soft closing system

Drawer organization included



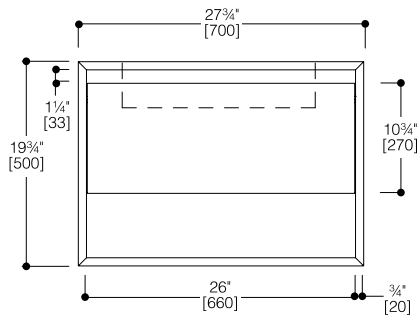
*Approximate measurements for comparison only.

Note: These dimensions and specifications are subject to change without notice.

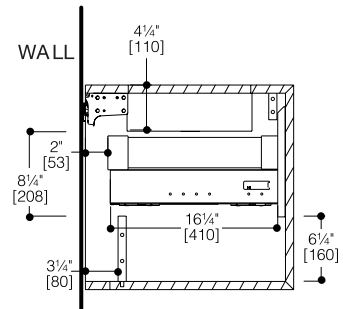
FXV2-0700 + FV2D-0700 SPECIFICATIONS

45° FENIX collection

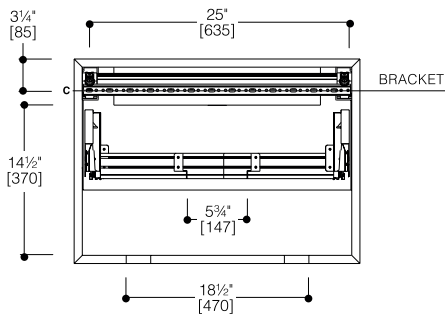
UP series 700 wall-mount vanity



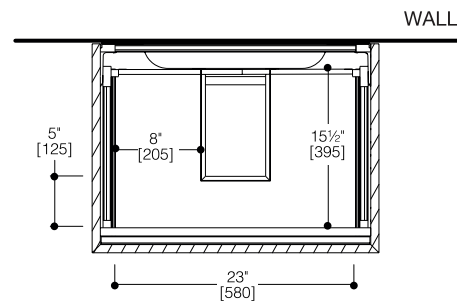
FRONT VIEW



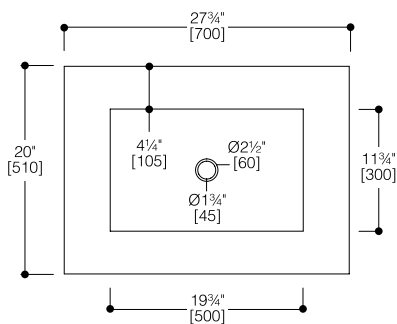
SIDE VIEW



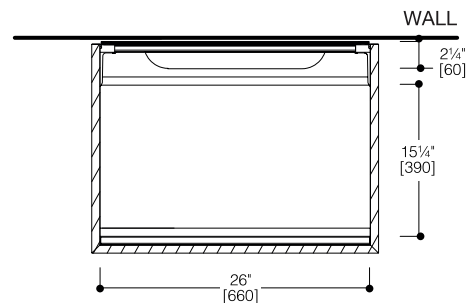
WALL DRILLING SCHEME FOR VANITY



TOP DRAWER VIEW



VANITY TOP VIEW



BOTTOM SHELF VIEW

INSTALLATION NOTES:

Install this product according to the installation guide. Our products must be installed by professionals only and according to our installation guide as well as federal, provincial / state and local building codes and regulations.