

# F45V2-0700.1 + FV2D-0700.1 SPECIFICATIONS

## 45° collection UP series 700 wall-mount vanity

### FEATURES:

- Wall-mount vanity with single drawer + open bottom shelf
- Drawer organization included: storage compartment, 2 cosmetic holders + storage bin
- The two lower angles feature a unique 45 degree join
- Drawers designed for plumbing clearance
- Recessed integral finger pull channel with Hettich soft-close system
- One continuous bracket along the backside for ease of installation: allows for easy retrofitting/hitting studs (Refer to the Installation Guide)
- Made of IDROLEB ECOLOGICAL PANEL with the lowest formaldehyde emissions + also ensures defence against humidity
- Wall-mount design opens space & facilitates easy cleaning
- Italian-crafted for superior quality



### SPECIFICATIONS:

Dimensions:	(WHD) 27½" W x 19¾" H x 20" (700mm x 500mm x 510mm)*
Shipping Dimensions	(WHD) 32" x 23¼" x 24¼" (810mm x 590mm x 615mm)*
Warranty:	Five Year Limited Warranty (Residential) One Year Warranty (Commercial)

### ACCESSORIES (SOLD SEPARATELY):

- Recommend INOX stainless steel under basin siphon trap: QTW-0006

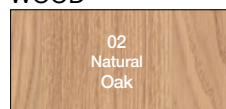
### VANITY/COUNTER TOP OPTIONS:

- SA0700 blu-stone™ vanity top basin or SAC0700 countertop

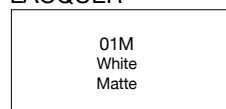
### COLORS/FINISHES:

#### A VANITY FRAME

#### WOOD



#### LACQUER

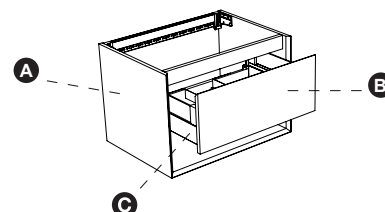


#### B DRAWER FRONT



#### LACQUER

01 White	04 Black	62 Efeso	68 Bromo	88 Ottawa	90 Londra	94 Jaipur	96 Orinoco
01M - matte 01G - gloss	04M - matte 04G - gloss	62M - matte 62G - gloss	68M - matte 68G - gloss	88M - matte 88G - gloss	90M - matte 90G - gloss	94M - matte 94G - gloss	96M - matte 96G - gloss



**Note:** Wood is a natural product, therefore any variations in color, vein or finish on wood is considered part of the wood's value and craftsmanship.

**A Wood - Natural Oak**  
Constructed Engineered (MDF) covered with natural wood veneer finish + massif wood 45° corners

#### Lacquer

Engineered wood (MDF) panel IDROCARB

**B Wood - Natural Oak**  
Constructed of real massif wood + wood veneer finish

#### Wood -Vintage Oak

Wood veneer on a multi layer birch wood panel

#### Wood - Distressed Oak

Solid wood three layer oak

#### Lacquer

Engineered wood (MDF) panel IDROCARB

**C** Solid rust free powder coating metal drawer with side glass  
Hettich soft closing system

Drawer organization included

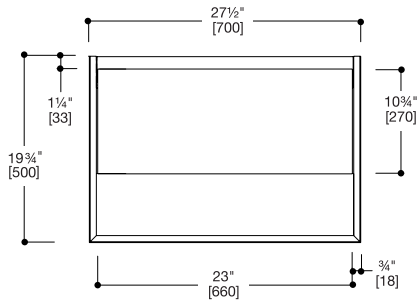


\*Approximate measurements for comparison only.

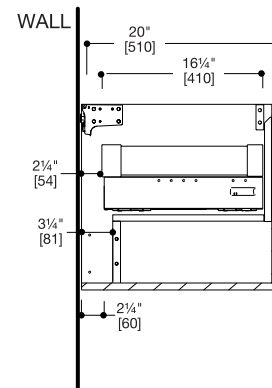
**Note:** These dimensions and specifications are subject to change without notice.

# F45V2-0700.1 + FV2D-0700.1 SPECIFICATIONS

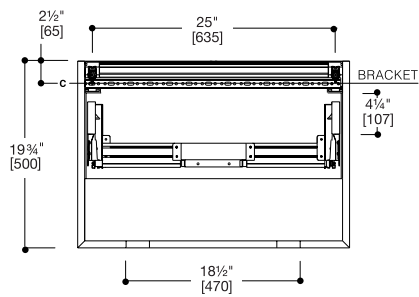
45° collection UP series 700 wall-mount vanity



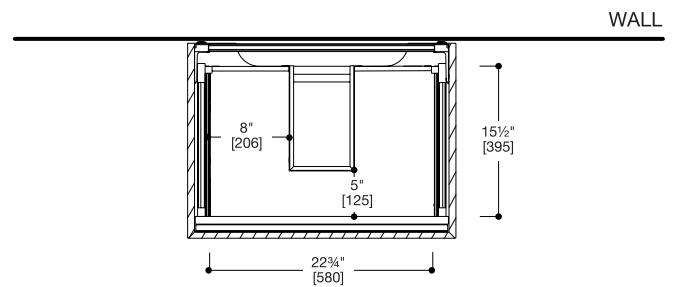
FRONT VIEW



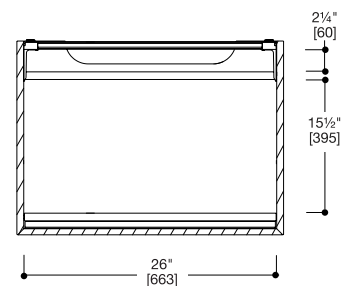
SIDE VIEW



WALL DRILLING SCHEME FOR VANITY



TOP DRAWER VIEW



BOTTOM DRAWER VIEW

## INSTALLATION NOTES:

Install this product according to the installation guide. Our products must be installed by professionals only and according to our installation guide as well as federal, provincial / state and local building codes and regulations.