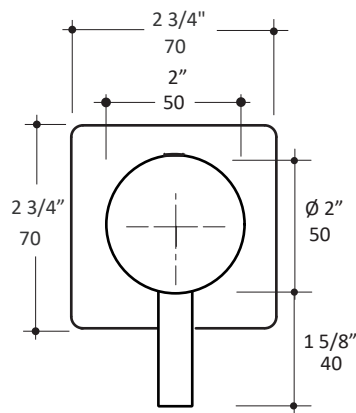


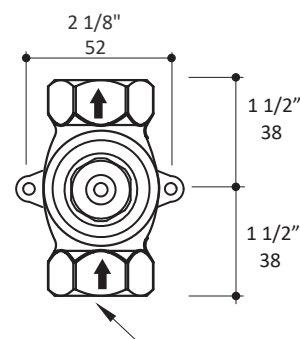
## Specifications:

<b>Installation:</b>	built-in wall mount
<b>Exterior Dimensions:</b>	W: 2 3/4" H: 2 3/4"
<b>Material:</b>	solid brass construction ceramic cartridge
<b>Water use:</b>	12 GPM (43.5 PSI)
<b>Finishes:</b>	CR - polished chrome PN - polished nickel NI - brushed nickel BG - brushed gold 44 - matte black
<b>Fittings included:</b>	Rough-in # VST-CL or VST-CC and trim # 15ST.L.S-A



## Features:

- stop valve
- square backplate
- lever handle
- opens clockwise VST-CL or counterclockwise VST-CC (standard)
- volume valve with 90° rotating angle
- 3/4" NPT water IN and OUT connections
- 1/2" NPT reducers available
- 1" extension kit available



2 X F 3/4 NPT  
for 3/4 copper tubing

## Codes + Standards:

- Meets and exceeds applicable national codes and standards
- CAL-Green compliant



compliant when installed to specific requirements of this regulation

## Recommended Items:

- Replacement parts:
  - VST rough-in
  - 15ST.L.S-A trim
  - VST-C ceramic cartridge
  - VST-EX 1" extension kit

