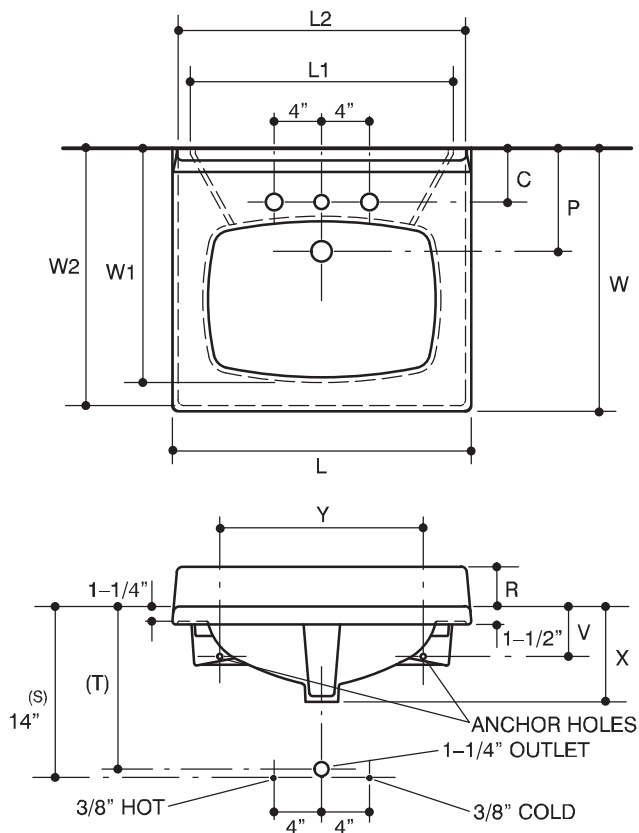
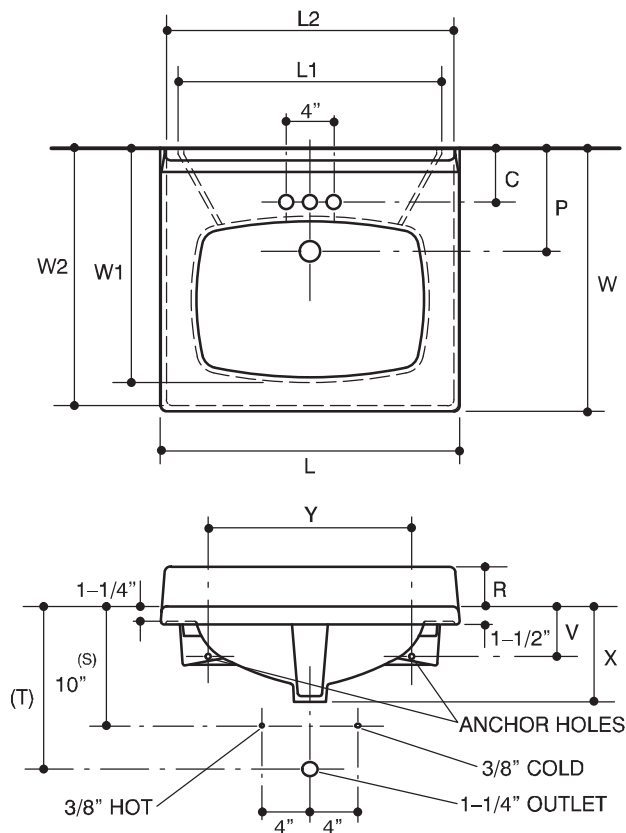


KOHLER®

INSTALLATION INSTRUCTIONS

ROYALE™ VITREOUS CHINA VANITY TOP LAVATORY



SPECIFICATIONS

| | |
|-------------------------------------------|----------|
| 19" x 17" lav; faucet holes on 4" centers | K-2252-4 |
| 25" x 22" lav; faucet holes on 4" centers | K-2253-4 |
| 19" x 17" lav; faucet holes on 8" centers | K-2252-8 |
| 25" x 22" lav; faucet holes on 8" centers | K-2253-8 |

| | | Minimum interior cabinet size | | Maximum exterior cabinet size | |
|--------------------|--|-------------------------------|---------|-------------------------------|---------|
| | | L1 | W1 | L2 | W2 |
| K-2252-4, K-2252-8 | | 16-1/4" | 15" | 18" | 16-1/2" |
| K-2253-4, K-2253-8 | | 22" | 20-1/4" | 24" | 21-1/2" |

| L | W | C | P | R | V | X | Y |
|-----------|---|--------|---------|---------|----------|----|---------|
| 19" x 17" | | 3-1/8" | 7-1/16" | 2-5/8" | 3-13/16" | 7" | 13-1/2" |
| 25" x 22" | | 4-1/2" | 8-5/8" | 3-5/16" | 4-3/16" | 8" | 17" |

| | Side to Side | Front to Back | Depth to Overflow |
|--------------------|--------------|---------------|-------------------|
| K-2252-4, K-2252-8 | 14-1/2" | 9-7/8" | 4-3/8" |
| K-2253-4, K-2253-8 | 19" | 13" | 5" |

Specifications Cont'd;

NOTES

(S) Based on use of 12" riser which may require cutting.

19" x 17": (T) Pop-up drain 12-5/8".
Grid drain 11-3/4".

25" x 22": (T) Pop-up drain 13-5/8".
Grid drain 12-3/4".

Cabinet front corner braces, back panels, and/or bracing may have to be modified or relocated on some cabinet models.

PLEASE LEAVE THESE INSTRUCTIONS FOR THE CONSUMER AS THEY CONTAIN IMPORTANT WARRANTY AND CARE AND CLEANING INFORMATION.

Specifications Cont'd;

| | |
|----------------------------------|--------------|
| Outlet | 1-3/4" Dia. |
| Faucet holes, K-2252-4, K-2253-4 | 1-3/16" Dia. |
| K-2252-8, K-2253-8 | 1-3/8" Dia. |
| Spout hole | 1-3/16" Dia. |
| Adhesive sealant (1) | 63034 |
| Cork shims (6) | 63067 |

BEFORE YOU BEGIN:

Review the lavatory dimensions on the first page. Ensure that the cabinet you selected meets the dimensions of lavatory.

Before installing vanity make sure the cabinet is level and installed securely according to manufacturer's directions. Also ensure that the supply and drain piping have already been installed according to roughing-in dimensions and local plumbing codes.

TOOLS AND MATERIALS NEEDED

- Level
- Adjustable Wrench
- Ruler and Pencil
- Safety Shoes & Glasses
- Drill and Drill Bits
- Paper Toweling

INSTALLATION PROCEDURE

1. Provide backing behind finished wall for anchoring lavatory.

2. Install faucet and drain fitting according to manufacturer's instructions. **DO NOT OVERTIGHTEN OR DAMAGE MAY RESULT.**

3. Place lavatory on cabinet and against wall. Lavatory should be centered on cabinet. Check with level. Shim with cork disks provided between lavatory and cabinet if necessary to eliminate rocking. Secure lavatory to wall with two lag bolts and washers, wood screws and washers, or toggle bolts depending on construction. **DO NOT OVERTIGHTEN FASTENERS OR DAMAGE MAY RESULT.**

4. Apply a bead of adhesive caulking supplied, between top of cabinet and lavatory. Wipe off excess mastic immediately (mastic is water soluble until it dries).

5. Connect faucet to water supply and drain to trap according to manufacturer's instructions.

6. A bead of water resistant sealer between the lavatory and wall is recommended.

IMPORTANT CONSUMER INFORMATION

LIMITED ONE-YEAR WARRANTY

Kohler plumbing fixtures and fittings are warranted free of manufacturing defects.

Kohler Co. will, at its election repair, replace, or make appropriate adjustment where Kohler Co. inspection disclosed any such defects occurring in normal usage within one year after installation. **Kohler Co. is not responsible for installation costs.**

To obtain warranty service, contact Kohler Co. either through your Dealer or Plumbing Contractor or by writing Kohler Co., Attn: Customer Service Department, 444 Highland Drive, Kohler, WI 53044 U.S.A., or by calling **1-800-4-KOHLER** from within the USA.

Implied warranties, including that of merchantability and fitness for a particular purpose, are expressly limited in duration to the duration of this warranty. To the extent permitted by law, Kohler Co. disclaims all implied warranties including merchantability and fitness for a particular purpose. Kohler Co. disclaims any liability for special, incidental, or consequential damages.

Some states do not allow limitations on how long an implied warranty lasts or the exclusion or limitation of incidental or consequential damages, so this limitation and exclusion may not apply to you. This warranty gives you specific legal rights. You may also have rights which vary from state to state.

This is our exclusive written warranty.

KOHLER CO., KOHLER, WISCONSIN 53044

CONSUMER RESPONSIBILITIES

When cleaning your vitreous china product, **DO NOT USE HARSH ABRASIVE CLEANERS** or you may scratch the glass-like glazed surface.

For cleaning your cabinet, refer to the recommended cleaners of the cabinet manufacturer.