

Job or Customer :	
Location :	
Engineer :	
<input type="checkbox"/> Complies with Spec <input type="checkbox"/> Alternate	Notes :
Contractor :	
HeatLink Rep :	
Submitted By :	Date :
Approved By :	Date :
P.O. Number :	Date :

Description

Press sleeve with view hole.

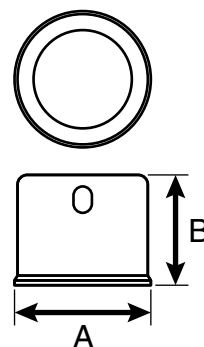
The use of PEX tubing in a potable hot-water plumbing system with an operating temperature above 140°F (60°C) or system pressure above 80 psig (550 kPaG) or highly aggressive water quality or any combination thereof can significantly reduce the service life of the tubing.

HeatLink requires following the guidelines described in Plastics Pipe Institute TN-53, Guide to Chlorine Resistance Ratings of PEX Pipes and Tubing for Potable Water Applications and HeatLink INFO 37, Domestic Hot Water Recirculation Systems.

Qty	Stk. #	Size	A	B	Weight
	24205	1/2"	0.72" (18.3 mm)	0.57" (14.5 mm)	0.01 lb (0.005 kg)
	24222	3/4"	0.97" (24.6 mm)	0.60" (15.2 mm)	0.01 lb (0.005 kg)
	24228	1"	1.22" (31.0 mm)	0.83" (21.1 mm)	0.02 lb (0.009 kg)
	24235	1 1/4"	1.55" (39.4 mm)	0.93" (23.6 mm)	0.04 lb (0.018 kg)
	24241	1 1/2"	1.81" (46.0 mm)	1.12" (28.4 mm)	0.06 lb (0.027 kg)
	24250	2"	2.33" (59.2 mm)	1.47" (37.3 mm)	0.10 lb (0.045 kg)

Technical Data

Specifications
Material Stainless Steel 304



Installation

Installation must follow all of HeatLink's instructions and guidelines.

Related Documents

- HeatLink Limited Plumbing Warranty

Standards
ASTM F877
CSA B137.5

Listings
cNSFus-pw or

