

**MOLDED STONE® INTEGRAL DRAIN
MOP SERVICE BASIN**

☐ **MSBID2424**

- Molding done in matched metal dies under heat and pressure resulting in a one-piece homogeneous product
- Integral drain is molded into a one piece unit and designed to connect to a 3" (76mm) drain pipe with a QIC3XH gasket
- Stainless steel strainer included

Nominal Dimensions:

24" x 24" x 10"
(610 x 610 x 254mm)

Shipping Weight:

27lbs. (12.3 Kg)



Optional Components:

- ☐ **QIC32** Quick Drain Connector for 2" pipe. Order separately.
- ☐ **QIC3SN** Quick Drain Connector for 3" cast iron soil pipe. Order separately
- ☐ **830AA** Service Faucet:
 - Chrome plated with vacuum breaker, integral stops, adjustable wall brace, pail hook and 3/4" hose thread on spout
- ☐ **832AA** Hose & Hose Bracket
- ☐ **889CC** Mop Hanger
- ☐ **833AA** Silicone Sealant
- ☐ **E77AA24** Vinyl Bumperguard
- ☐ **MSG2424** Stainless Steel Wall Guard

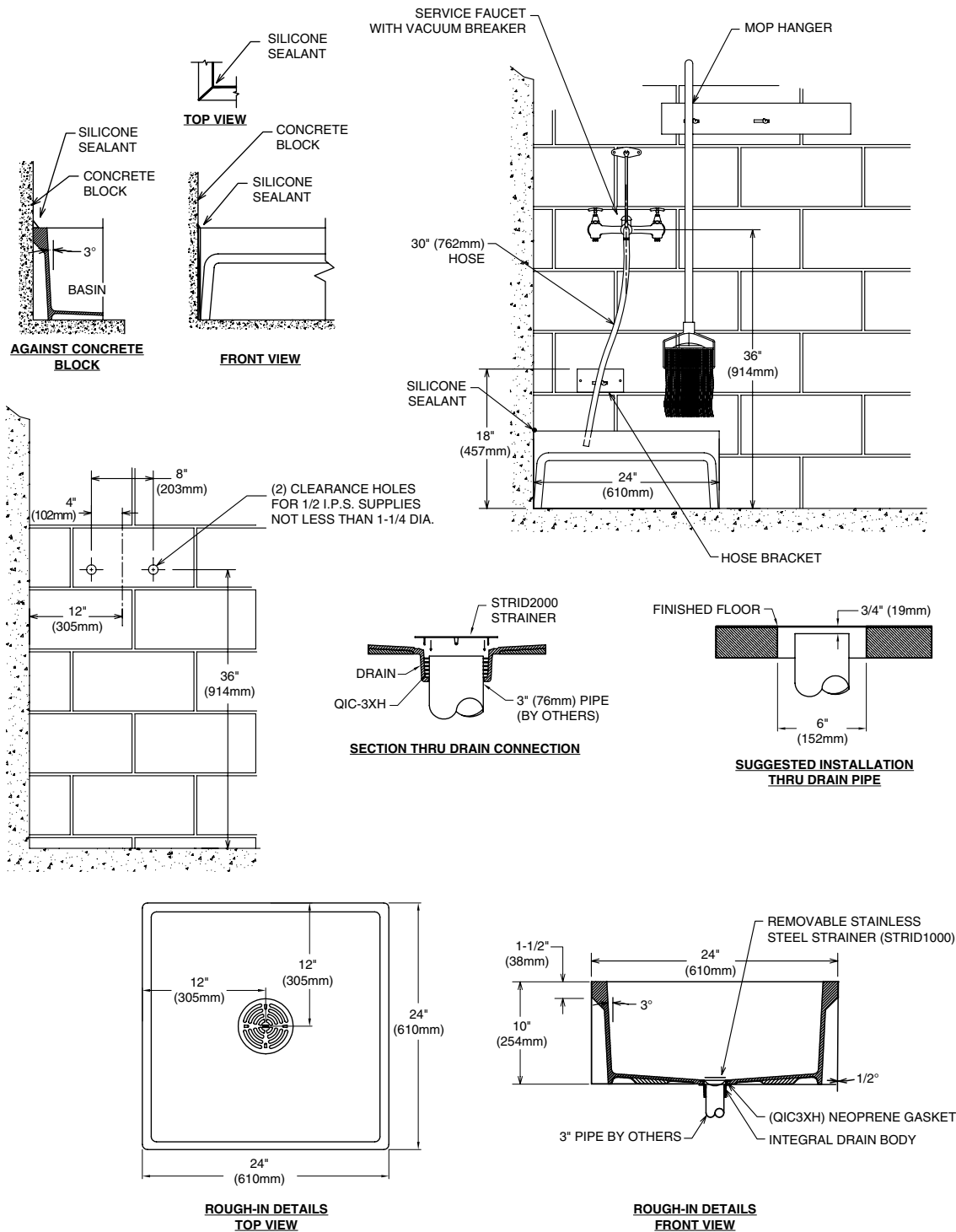
SEE REVERSE FOR ROUGHING-IN DIMENSIONS

Compliance Certifications -

Meets or Exceeds the Following Specifications:

- IAPMO / ANSI Z124.6-2007
- ASME A112.18.2 / CSA B125.2
- CSA B45.5
- Made in U.S.A.

**MOLDED STONE® INTEGRAL DRAIN
MOP SERVICE BASIN
MSBID2424**



Installation Note : QIC32 Quick Drain Connector for 2" pipe or QIC3SN Quick Drain Connector for cast iron soil pipe must be ordered separately.
IMPORTANT: Roughing-in dimensions may vary 1/2" and are subject to change or cancellation without prior notice.