

### Features

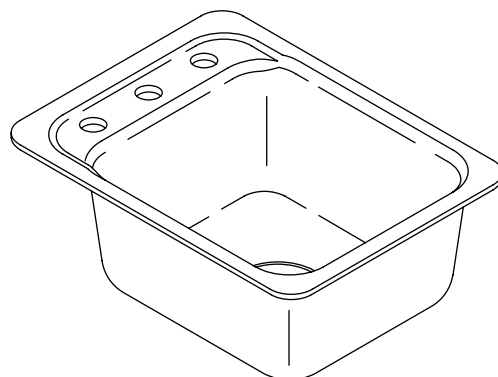
- KOHLER cast iron
- Acid-resistant enamel finish
- Tile-in or metal frame installation
- Single compartment
- 3-hole
- 21" (53.3 cm) x 16" (40.6 cm) x 8-1/2" (21.6 cm) height

### Codes/Standards Applicable

Specified model meets or exceeds the following:

- ASME A112.19.1M
- IAPMO/UPC
- CSA B45.0
- CSA B45.2

## TILE-IN OR METAL FRAME KITCHEN SINK K-5961



### Colors/Finishes

- 0: White
- Other: Refer to Price Book for additional colors/finishes

### Accessories

- CP: Polished Chrome
- NA: None applicable
- Other: Refer to Price Book for additional colors/finishes

### Specified Model

Model	Description	Colors/Finishes	
K-5961-3	3-hole sink	<input type="checkbox"/> 0	<input type="checkbox"/> Other_____
<b>Recommended Accessories</b>			
K-6592	Metal frame	<input type="checkbox"/> NA	
K-9000	P-Trap	<input type="checkbox"/> CP	
<b>Optional Accessories</b>			
K-8801	Duostrainer® sink strainer	<input type="checkbox"/> CP	<input type="checkbox"/> Other_____

### Product Specification

The kitchen sink shall be made of cast iron with acid-resistant enamel finish. Sink shall be tile-in or metal frame mounted with a single compartment. Sink shall be 3-hole. Sink shall be 21" (53.3 cm) in length, 16" (40.6 cm) in width and 8-1/2" (21.6 cm) in height. Sink shall be Kohler Model K-5961-3-\_\_\_\_\_.

# MAYFIELD™

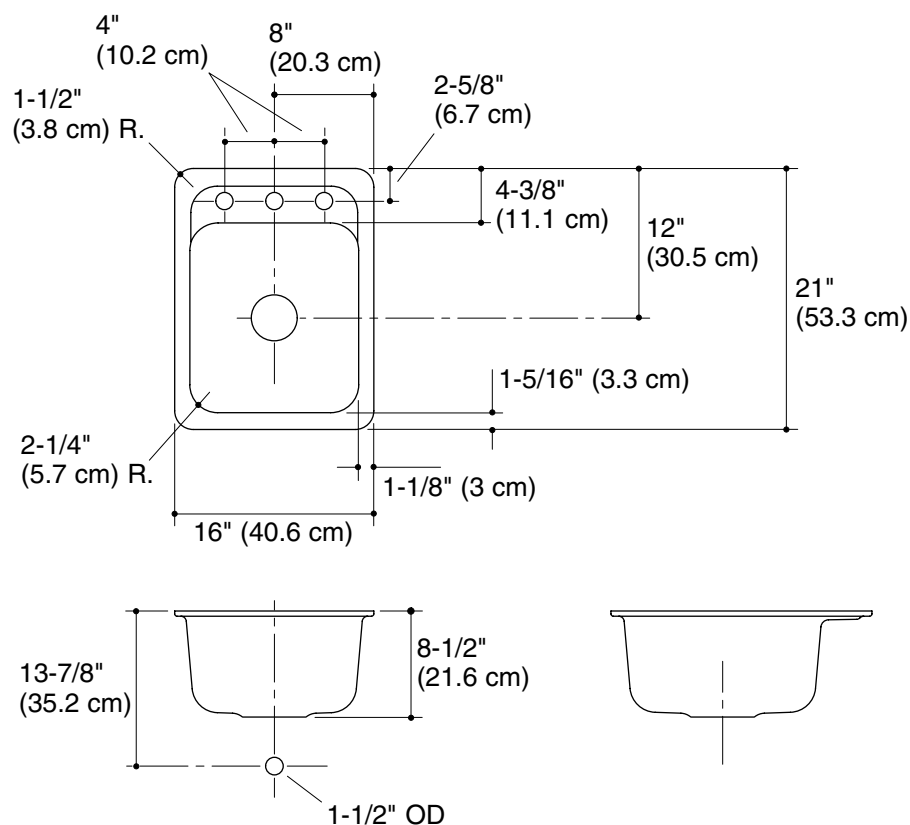
## Technical Information

Fixture*:	
Basin area	15" (38.1 cm) x 14" (35.6 cm)
Water depth	7-3/4" (19.7 cm)
Drain hole	3-5/8" (9.2 cm) D.
Faucet holes	1-3/8" (3.5 cm) D.
* Approximate measurements for comparison only.	
Included component:	
Cut-out template	114572-7

## Installation Notes

Install this product according to the installation guide.

A metal frame is required for installation.



## Product Diagram

MAYFIELD™ TILE-IN OR METAL FRAME KITCHEN SINK

Page 2 of 2  
114572-4-BC

THE BOLD LOOK  
OF **KOHLER**®