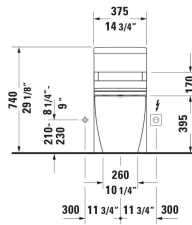
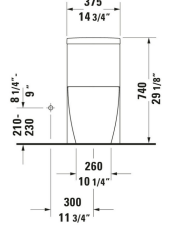
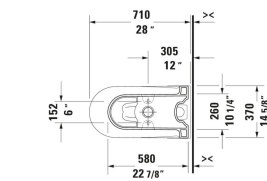
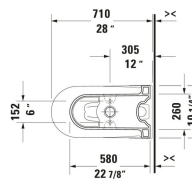
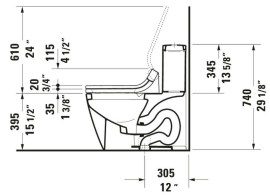
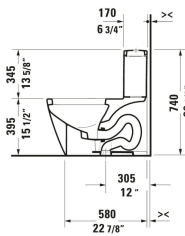
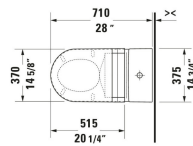
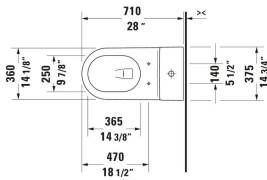


Starck 2 One Piece Toilet # 2133010005

| < 14 3/4 " > |



One Piece Toilet	Dimension	Weight	Order number
28 ", elongated, Single Flush, Flush water quantity: 1.28 gal, extractor/siphon Jet, Flushing rim: Closed, Outlet: vertical, Trip lever placement: Top, Rough-in: 12 ", cUPC listed: Yes			
Colors			
00 White			
Variant			
White High Gloss, WaterSense: Yes, ADA: No		125.663 lb	2133010005
Spare parts			
Installation Set One Piece Toilet, Toilet Bowl	2 3/8 x 5 1/8 "	1.896 lb	001431
Suitable products			
Toilet Seat Open front, elongated, 14 3/8 x 19 1/8 "	14 3/8 x 19 1/8 "		006431
Toilet Seat Slow close, Open front, elongated, 14 3/8 x 19 1/8 "	14 3/8 x 19 1/8 "		006439
Toilet Seat Slow close: No, Hinge material: Stainless Steel, elongated, 14 5/8 x 19 5/8 "	14 5/8 x 19 5/8 "		006332
Toilet Seat Slow close: Yes, Removable Seat, Hinge material: Stainless Steel, elongated, 14 5/8 x 19 1/4 "	14 5/8 x 19 1/4 "		006339
One Piece Toilet , 14 3/4 x 28 "	14 3/4 x 28 "		D16547
One Piece Toilet , 14 3/4 x 28 "	14 3/4 x 28 "		D16549

All drawings contain the necessary measurements which are subject to standard tolerances. They are stated in inch & mm and are non-binding. Exact measurements, in particular for customized installation scenarios, can only be taken from the finished ceramic piece.