



- Rough parts
- 2x female thread 1/2" connections

**Separate LED Power supply**

**Input LED Power supply**

- Input 100-240V AC 50-60Hz

**Output LED Power supply**

- 350mA (CC)

**Output Specification LED Power supply**

- SELV (Safety Extra Low Voltage)
- Class 2

**Ceiling module power supply**

- 350mA (CC)
- Connecting cable 27-1/2"
- Light switch not included

**Environment**

- Not suitable for outdoor use.
- Not suitable for use in a steam room.
- Not suitable for use in chlorinated or salty environments.
- Observe the regulations concerning protected zones specified in DIN VDE 0100, Part 701 (IEC 60364-7-701).

Pre-assembly kit for three-way diverter included



Installation rough , ceiling-mounted with light -

SERIES-VARIOUS

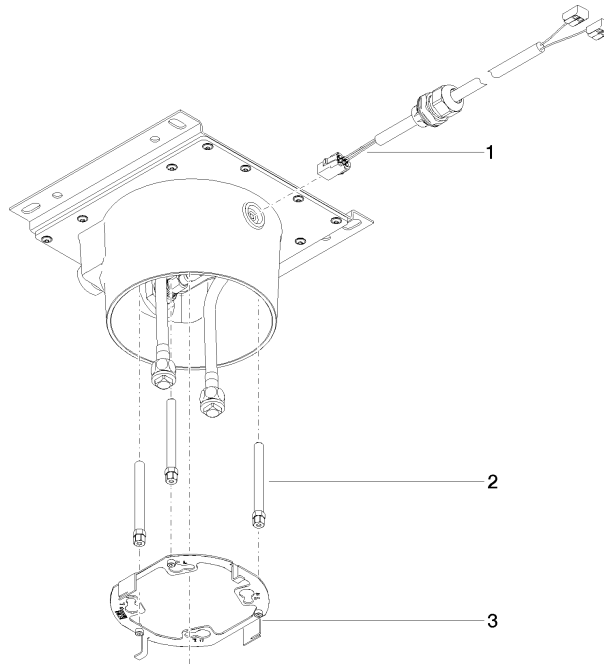
35 042 970    Product version from 4/1/2022

Codes & Standards

ASME A112.18.1                      cUPC

Certificates and sustainability

IAPMO\_4976 (



## Spare parts list

Number	Item Number	Designation	Number of units	Lead time
1	90 10 01 227 00 90	electronic accessories	1.00	2
3	90 30 30 208 00 90	screw	1.00	2
4	90 17 20 239 00 90	flange	1.00	2
2	90 10 01 257 00 90	electronic accessories	1.00	2