

# F51V1-1200 SPECIFICATIONS

## 51 collection series 1200 wall-mount vanity

### FEATURES:

- Wall-mounted vanity with deep drawer + slim drawer insert
- Slim inner drawer designed for plumbing clearance
- Solid rust-free painted powder frame construction and drawer runners
- Hettich push/pull drawer opening system
- One continuous bracket along the backside for ease of installation: allows for easy retro-fitting/hitting studs where backing or additional support is not available
- Wall mount design opens space and facilitates easy cleaning
- Made of IDROLEB ECOLOGICAL PANEL with the lowest formaldehyde emissions in the world
- IDROLEB also ensures defence against humidity
- Italian-crafted for superior quality
- Drawer organization available (sold separately)

### SPECIFICATIONS:

Dimensions:	(WHD) 47¼" x 19" x 20¼" (1200mm x 480mm x 515mm)*
Weight:	97lbs (44kg)*
Materials:	Hard Surface Technology (HST) Hard Surface Technology (HST) finishes offer extraordinary technical performance in terms of exceptional durability, extremely high resistance to scratches and chemicals, in addition to a beautiful aesthetic and tactile wood grain effect
	<u>Lacquer</u>
Warranty:	Five Year Limited Warranty (Residential) One Year Warranty (Commercial)
Shipping Weight:	116.8lbs (53kg)*
Shipping Dimensions	(WHD) 51½" x 23¼" x 24¼" (1310mm x 590mm x 615mm)

### STOCKED

#### COLOR/FINISH:

HST Lacquer



#### TIER A:

HST



Lacquer



### VANITY TOP OPTIONS:

- SA1200/SA1210 blu-stone™ vanity top basin

### DRAWER ORGANIZATION OPTIONS:

- F01AC-01 2 Storage Compartments
- F01AC-02 2 Cosmetic Holders
- F01AC-03 2 Storage Bin Sets
- F01AC-04 1 Tissue Box

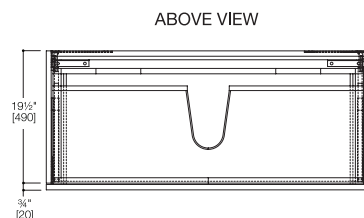
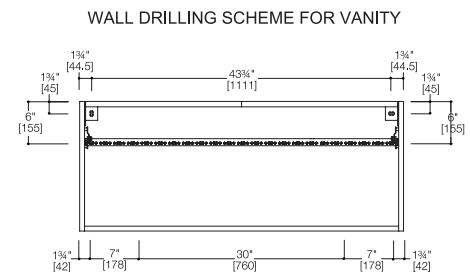
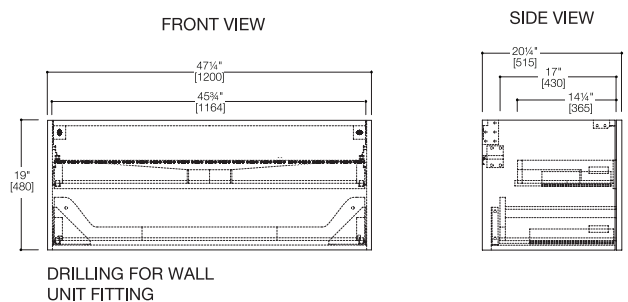
### INSTALLATION NOTES:

Install this product according to the installation guide. Our products must be installed by professionals only and according to our installation guide as well as federal, provincial / state and local building codes and regulations.



\*Approximate measurements for comparison only.

Note: These dimensions and specifications are subject to change without notice.



Drawer organization available for all 51 vanities

